



STORMTECH®

nurtured by nature

SPRING 2021 STYLE GUIDE

SPRING 2021

BAGS & PACKS NEW COLLECTION

Bags spell adventure. If you are packing a bag, it means you are headed somewhere. Perhaps it's a commute to your first day on the job, or maybe you are headed to the airport to answer the call of adventure. Whatever exciting road lies ahead, you have this one in the bag thanks to STORMTECH. We are committed to designing durable, versatile, progressive-looking travel bags that are and fiercely protective of your belongings.



1. NOMAD BACKPACK SWX-1

3. MADISON COMMUTER PACK BPX-5

2. NORSEMAN ROLL TOP PACK RTB-1

4. EQUINOX 30 DUFFEL BAG CTX-2

5. NOMAD DUFFEL BAG MDX-1M



SPRING 2021 BAGS & PACKS

COOLER BAGS & PACKS

It's time to swap the party life for another kind of wildlife. While the outdoors restores your inner balance, STORMTECH Cooler Bags & Packs will keep your refreshments crisp and fresh in the insulated, leak-proof, welded storage compartment. So you can pack for a picnic or deliver the refreshments.



OREGON 24 COOLER BACKPACK
RGX-1



**3 External Storage
Zippered Compartments**
Ensures your contents
are organized, safe and
secure while remaining
within easy reach



Large Main Zippered Opening
Allows adequate space for
a variety of contents



NEW

OREGON 24 COOLER BACKPACK

RGX-1

MSRP **\$90.00**

On-point practicality, The Oregon 24 Backpack Cooler is a classically styled, durable and waterproof backpack that embraces spontaneity. Throw your favorite refreshments into the spacious main compartment, pop your tablet into the side compartment, and add your personal accessories into the front pocket. Adjust the ergonomic shoulder straps and feel the comfort of the airflow padded back panel. You're all set for adventure.

FABRICATION: Shell: 100% Polyurethane, Shell-Secondary: 100% PVC, Lining: PVC and Polyester

 **Ultrasonic Welded Seams (Inside Liner Only)**

 **Waterproof Fabric**

SIZING: 19"H x 10"W x 7.5"D

VOLUME: 23L / 24 CAN

DECORATION OPTIONS:



GRAPHITE/BLACK



AZURE BLUE/BLACK



RED/BLACK



WHITE/GREY

OASIS 24
PACK COOLER
BAG
MCX-1



Carry Handles
Allow the cooler to be easily and comfortably slung over the shoulder



Large Main Zippered Opening
Extra long waterproof zipper allows quick and easy access to content



NEW

OASIS 24 PACK COOLER BAG

MCX-1

MSRP **\$50.00**

While the outdoors restores your inner balance, the Oasis 24 Pack Cooler will keep your refreshments crisp and fresh in the insulated, leak-proof compartment. Features include an easy access, extra long waterproof zipper and compression straps to secure contents.

FABRICATION: Shell: 100% Polyurethane, Shell-Secondary: 100% PVC, Lining: PVC and Polyester

 **Ultrasonic Welded Seams**
(Inside Liner Only)

 **Waterproof Fabric**

SIZING: 14.5"H x 11"W x 9"D

VOLUME: 20L / 24 CAN

**DECORATION
OPTIONS:**



GRAPHITE/BLACK



AZURE BLUE/BLACK



RED/BLACK



WHITE/GREY

OASIS 12
PACK COOLER
NTX-1



External Pocket
Provides quick in-and-out
convenience for items
that require frequent use



Quick Release Closure & Handle
For grab and go convenience



NEW

OASIS 12 PACK COOLER

NTX-1

MSRP **\$30.00**

Featuring an easy to wipe clean, lined storage compartment, the Oasis 12 Pack Cooler keep contents cold and protected. Wide-mouth quick release closure with adjustable straps allows you to customize the bag size, keeping your refreshments cold and secure.

FABRICATION: Shell: 100% Polyester PU coated, Shell-Secondary: 100% PVC
Lining: PVC and Polyester

-  **Ultrasonic Welded Seams**
(Inside Liner Only)
-  **Waterproof Fabric**

SIZING: 8.5" H x 9.5" W x 5.5" D

VOLUME: 8 L/12 CANS

DECORATION OPTIONS: E HT SP LP



GRAPHITE/BLACK



AZURE BLUE/BLACK



RED/BLACK



SATURNA COOLER BAG
CFR-1



Waterproof seams and
zippers designed to keep
contents cool



Padded back panel and shoulder
straps to promote air flow and keep
you cool in warm weather



SALT SPRING COOLER BAG
CFR-2

Ergonomic and
Adjustable
Shoulder Straps
Adjust to suit both
your supreme
comfort and
performance

100% Waterproof
Ultrasonic Seams
Ultrasonic
technology creates
welded protection
against any
moisture infiltration

Large Zippered
Insulated Leak-
Proof Storage
Compartment
Provides a
zippered, leak-
free cooling
environment
for all of your
refreshments



CFR-1: DOLPHIN/BLACK

CFR-2: DOLPHIN/BLACK

SATURNA COOLER BAG

CFR-1

MSRP **\$140.00**

The Saturna Cooler Pack will keep contents cold and protected in its leak-proof, welded storage compartment. The roll-top closure with adjustable straps allows you to customize the size according to the contents, so you can pack for a picnic or deliver the refreshments.

FABRICATION: 100% PVC



Ultrasonic Welded Seams



Waterproof Fabric

SIZING:

16" H x 12.5" W x 8" D (closed)

VOLUME:

25 Liters / 1,525 Cubic Inch (24 Cans)

DECORATION OPTIONS:



SALT SPRING COOLER BAG

CFR-2

MSRP **\$100.00**

It's time to swap the party life for another kind of wildlife. While the outdoors restores your inner balance, the Salt Spring Cooler Bag will keep your refreshments crisp and fresh in the insulated, leak-proof compartment. Enjoy an icy pick-me-up when you pause for thought; then simply throw the comfy adjustable strap over your shoulder as you head off again.

FABRICATION: 100% PVC



Ultrasonic Welded Seams



Waterproof Fabric

SIZING:

12" H x 12.75" W x 8.75" D

VOLUME:

15 Liters / 915 Cubic Inch (16 Cans)

DECORATION OPTIONS:



SPRING 2021 BAGS & PACKS

STAVANGER COLLECTION

Secure your travel essentials with lightweight padded protection. Features a water-repellent quilted outshell, external and internal pockets, ensures you have everything you need for big city spontaneity. Pairs with our Stavanger series of thermal jackets and vests.



STAVANGER QUILTED DUFFLE
QBX-1



Side Compression Strap



Large Main Zipper Opening



STAVANGER QUILTED DUFFLE

QBX-1

MSRP **\$60.00**

Secure your travel essentials with lightweight padded protection. The Stavanger Quilted Duffle is designed with an extra-long access zipper attached to compression straps, so you can adjust to the load size. This statement piece says spontaneity as you cruise city streets with the extra-long carry straps slung effortlessly over your shoulder. Features a water-repellent quilted outshell, external and internal pockets, ensures you have everything you need for big city spontaneity. Pairs with our Stavanger series of thermal jackets and vests.

FABRICATION: Shell: 100% Nylon, Shell-Secondary: 100% Polyester PVC coated Lining: 100% Polyester

SIZING: 13" H x 19" W x 9" D

VOLUME: 36 Liters / 2,196 Cubic Inch

DECORATION OPTIONS:



BLACK



GRAPHITE

STAVANGER
QUILTED BACKPACK
QBX-3



**Ergonomic, Adjustable
Shoulder Straps**
Adjust to suit both your
supreme comfort and on-the
go functionality



Secure Storage Compartments
Quickly accessible, zippered
compartments organize and secure
your documents

Quilted Polyfill Shell
Provides padded protection for your bag's contents


FEATHER-FREE THERMAL SHELL
High loft synthetic insulation, designed to be lightweight and compactible



Provides an all-you-need basic level of water resistance for cool to cold wet weather conditions

Ergonomic, Adjustable Shoulder Straps
Adjust to suit both your supreme comfort and on-the-go functionality

Large Main Zippered Opening
Allows adequate space for a variety of contents

Secure Storage Compartments
Quickly accessible, zippered compartments organize and secure your documents

BACK VIEW

STAVANGER QUILTED BACKPACK

QBX-3

MSRP **\$50.00**

Padded protection for your travel essentials, the Stavanger Quilted Backpack has all bases covered for your daily commute. An easy access padded laptop compartment, a water repellent quilted outshell are just a few of the handy features you will find on this pack which pairs perfectly with our Stavanger series thermal collection.

FABRICATION: Shell: 100% Nylon, Lining: 100% Polyester

 **15" Maximum Device Size**

SIZING: 16.5" H x 11" W x 5.5" D

VOLUME: 16 Liters / 976 Cubic Inch

DECORATION OPTIONS:

E

SP

LP



BLACK




GRAPHITE

INDIO CINCH BAG

QSB-1

The water repellent Indio Cinch Bag will rally your bag's possessions together while you go about the job of living. Its drawstring functionality provides easy access to your contents, while the quilted polyfill shell protects them. And when you're done, the soft touch, compactible design is engineered to pack down. Simple and effective, with no fuss. Just as the name implies.




**FEATHERFREE
THERMAL SHELL**
High loft
synthetic
insulation,
designed to be
lightweight and
compactible

Drawstring Closure
Delivers a simple, yet
highly effective open
and close mechanism



Provides an all-you-need basic level of water resistance for cool to cold wet weather conditions



Quilted Polyfill Shell
Provides padded protection for your bag's contents

INDIO CINCH BAG

QSB-1

MSRP **\$22.00**

ADDITIONAL FEATURES:

- PFC-Free Water Repellent Finish

FABRICATION: Shell: 100% Nylon, 1.09 oz/yd² (USA) / 37 gsm (CDN), Lining: 100% Polyester

SIZING:

15" H x 11.5" W x 3.5" D

VOLUME:

9.89 Liters / 603 Cubic Inch

DECORATION OPTIONS:



BLACK



AZURE BLUE



BRIGHT RED

STAVANGER WAIST BAG

QBX-2

Designed for padded protection, The Stavanger Quilted Waist Bag is an inconspicuous and organized way to protect your valuables on-the-go. Consisting of three zipper compartments, this travel companion features a water repellent quilted body and adjusts to sit comfortably around your waist. It's out of sight so you can free your mind of worry. Accessorizes perfectly with our Stavanger collection of jackets and vests.



Adjustable Waist Belt
Allows for maximum
personal comfort


**FEATHERFREE
THERMAL SHELL**
High loft synthetic
insulation, designed
to be lightweight and
compactible



Provides an
all-you-need
basic level of
water resistance
for cool to cold
wet weather
conditions



BACK VIEW

STAVANGER WAIST BAG

QBX-2

MSRP **\$20.00**

ADDITIONAL FEATURES:

- Splash Resistant Zippered Main Compartment
- Internal Zippered Pocket
- Quilted Polyfill Shell

FABRICATION: Shell: 100% Nylon
Lining: 100% Polyester

SIZING:
6" H x 10" W x 1.5" D

VOLUME:
1.5 Liters / 91 Cubic Inch

DECORATION OPTIONS:



BLACK



GRAPHITE

SPRING 2021 BAGS & PACKS

URBAN COLLECTION

A bag isn't just a bag. It's both an accessory and necessary practicality. STORMTECH has addressed this dual function by creating an urban-ready range that looks slick and stylish while still offering smart, ergonomic functionality. Move fluidly through the city knowing that whether for work or play, all you need is right behind you.



MADAGASCAR DUFFLE PACK
VTX-1



Large Zippered End Pockets
Ensure your contents are organized, safe and secure while remaining within easy reach



Hidden Shoulder Straps
Tuck away the shoulder straps in a hidden pocket to easily convert to a duffle bag



MADAGASCAR DUFFLE PACK

VTX-1

MSRP **\$130.00**

Designed to be adaptable and spontaneous – the Madagascar Duffle Pack offers a large main zippered opening, generous pocket space, large interior zip mesh organizer compartments, this duffle has space for all your essential items. Swap to a backpack by merely adjusting the ergonomic shoulder straps, or quickly grab the side carrying handles when passing through airport security. This pack also features two zippered full access end pockets for quick storage of shoes, and compression straps to keep contents from shifting in transit.

FABRICATION: Shell: 100% Nylon Ripstop, Lining: 100% Polyester

 **Waterproof Fabric**

SIZING: 23" L x 13" W x 7.5" H

VOLUME: 40 Liters / 2,440 Cubic Inch

**DECORATION
OPTIONS:**



BLACK



GRAPHITE



EARTH

KITSILANO
DUFFLE
RTS-1



Compression Side Straps
Adjust these straps to reduce bulk and secure contents



Ventilated Stash Pocket
For shoes or damp clothing



KITSILANO DUFFLE

RTS-1

MSRP **\$100.00**

A sleek, minimalist design, the Kitsilano Duffel travels under the radar as you cruise city streets with the extra-long carry straps slung effortlessly over your shoulder. Its large main zippered opening with adjustable compression straps, multiple external and internal pockets, ensures you have everything you need for big city spontaneity. This Duffel also features a ventilated stash pocket for shoes or damp clothing.

FABRICATION: Shell: 100% Nylon PU coated, Shell-Secondary: 100% Nylon PVC coated
Lining: 100% Polyester

SIZING: 21" L x 9.5" W x 13" H

VOLUME: 32 Liters / 1,952 Cubic Inch

**DECORATION
OPTIONS:**



BLACK



GRAPHITE

CAMBRIDGE COMPUTER PACK

STR-1

Built from hard-wearing nylon ripstop fabric, the Cambridge Computer Pack is compact yet roomy with all bases covered for your daily commute. An easy access padded laptop compartment, dedicated tablet sleeve and dual side mesh beverage pockets are just a few of the handy features you will find on this bag. This pack also features ergonomic and adjustable shoulder and sternum straps and RFID blocking technology



Ergonomic,
Adjustable Shoulder
and Sternum Strap
Adjust to suit both
your supreme
comfort and
performance

Laptop Compartment
Secures your laptop in this
designated padded space

Padded and Ventilated Back Panel
Promotes airflow to keep back and
shoulders cool and comfortable

RFID Blocking Material
Intelligently protects your
data from wireless theft

Large Front Pocket
Large Front Pocket
Ensures that all your key
essentials are safe, secure
and organized

Dual Side
Mesh Pockets
Large side
mesh pockets
to keep water
bottles, snacks
and smaller
items visible
close at hand

BACK VIEW

BLACK

CAMBRIDGE COMPUTER PACK

STR-1

MSRP **\$80.00**

ADDITIONAL FEATURES:

- Multiple Storage Compartments

FABRICATION: Shell: 100% Nylon Ripstop
Lining: 100% Polyester



15" Maximum Device Size



RFID Blocker

SIZING: 19" H x 12" W x 7" D

VOLUME: 19 Liters / 1,159 Cubic Inch

DECORATION
OPTIONS:



NORSEMAN
CARRY ON
RTB-2



17" Laptop Compartment
Secures your laptop in this
designated padded space



Backpack Shoulder Straps
Conveniently switch between
carrying options as and when
your needs change

Shoe/Laundry Compartment

Keep things tidy even when away from home by separating your used items from the fresh

17" Laptop Compartment

Secures your laptop in this designated padded space

RFID Blocking Material

Intelligently protects your data from wireless theft

Backpack Shoulder Straps

Conveniently switch between carrying options as and when your needs change

Waterproof Fabric Base

Reinforced PVC base fabric resists water penetration to successfully protect your valuables

2 Internal Zip Mesh Pockets

Ensure that all your key essentials are safe, secure and organized

BLACK

NORSEMAN CARRY ON

RTB-2

MSRP **\$180.00**

Robust and lightweight, you can take on anything with the weather resistant Norseman Carry On. Organized, yet versatile. From the office to the trailhead, the zippered main compartment facilitates easy organization and access. Ensnconced in the 17-inch laptop sleeve, your computer is protected from hard impacts. This pack also features 2 internal organizers and RFID blocking technology. You'll be in your element, while this pack protects your belongings from them.

FABRICATION: Shell: 100% Polyurethane, Shell-Secondary: 100% Nylon PVC coated Lining: 100% Polyester



17" Maximum Device Size



RFID Blocker

SIZING: 20.5" H x 13" W x 8.5" H

VOLUME: 38 Liters / 2,318 Cubic Inch

**DECORATION
OPTIONS:**

E

SP

LP

EQUINOX
WHEELED DUFFLE
CTXW-1



Large Inside Zip Mesh Pocket
Ensures that all your key essentials are safe, secure and organized



Multiple Storage Compartments
Allows adequate space for a variety of contents



EQUINOX WHEELED DUFFLE

CTXW-1

MSRP **\$200.00**

Hard-wearing construction combined with heavy-duty wheels and components, the Equinox Wheeled Duffel provides a large main zippered opening, generous pocket space and a large inside organizational zip mesh pocket for all your essential items. Swap to a backpack by merely adjusting the ergonomic shoulder straps, or quickly grab the side carrying handles when passing through airport security. This wheeled duffel also features heavy duty rolling wheels for extended durability and a kick stand for balance and stability.

FABRICATION: Shell: 100% Polyester 600D, Shell-Secondary: 100% PVC
Lining: 100% Polyester

SIZING: 30" L x 13.5" W x 12.5" H

VOLUME: 82 Liters / 5,004 Cubic Inch

**DECORATION
OPTIONS:**

HT

SP



BLACK



CARBON

ODESSA
WHEELED DUFFLE
MWH-1



Large Inside Zip Mesh Pocket
Ensures that all your key essentials are safe, secure and organized



Multiple Storage Compartments
Allows adequate space for a variety of contents



ODESSA WHEELED DUFFLE

MWH-1

MSRP **\$170.00**

Built from hard-wearing PVC coated fabric, the Odessa Wheeled Duffel ups your travel game with a fully padded bottom and side panels for extra protection, an ID sleeve for easy identification on the luggage carousel, compression straps to reduce bulk, and multiple zippered pockets for easy organization. Heavy duty wheels allow you to roll over any surface with heavy loads. This high styled travel duffel delivers maximum versatility.

FABRICATION: Shell: 100% Polyurethane. Shell-Secondary: 100% Polyester 600D PVC coated , Lining: 100% Polyester

 **Waterproof Fabric**

SIZING: 20" L x 14" W x 9" H

VOLUME: 42 Liters / 2,562 Cubic Inch

**DECORATION
OPTIONS:**





SPRING 2021

URBAN CASUAL NEW COLLECTION

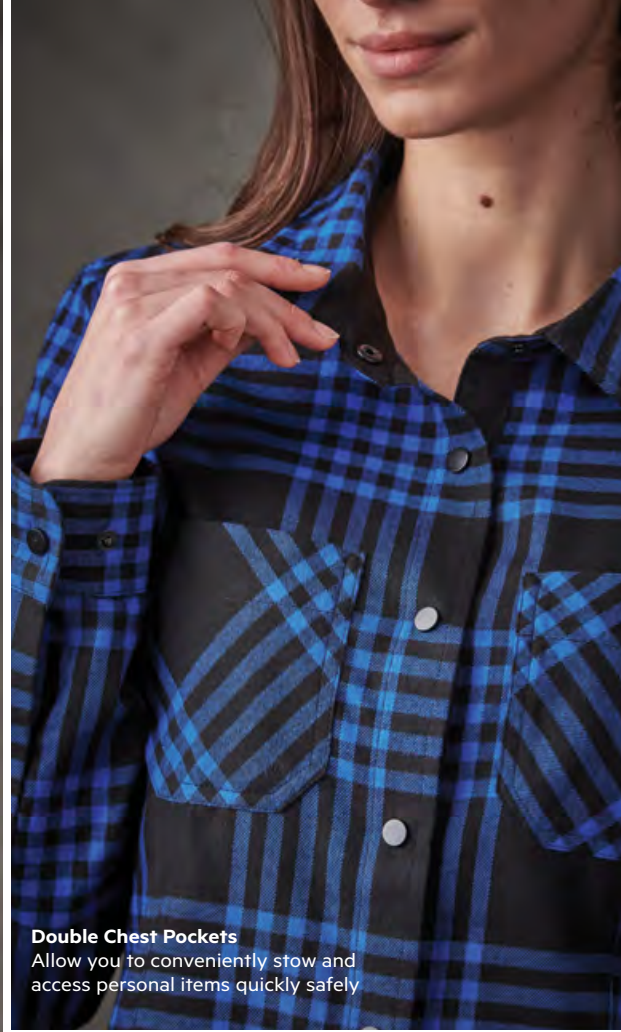
Our Urban Casual range makes looking good so natural, you're bound to have a few lingering stares. By combining the tranquility of the outdoors with just the right amount of city tempo, STORMTECH brings a style to the streets that is the perfect morphing of casual and edgy. Always at the forefront of fashion, our range of sweaters, knits, and jackets will take your style journey to the next level.



Lone Pine
Coffee
Roasters
7-5



SANTA FE
L/S SHIRTS
FTX-1 | FTX-1W



Double Chest Pockets
Allow you to conveniently stow and
access personal items quickly safely



Cuff Placket with Snaps
Provide a more secure fit at
the wrist and added style



NEW

SANTA FE L/S SHIRT

FTX-1 | FTX-1W

MSRP **\$60.00**

Vibrant color palette with sleek design delivers a refreshing take on the traditional plaid shirt. This urban outdoor staple has a clean, unforced finish that casually creates an eye-catching, cultured look with snap chest pockets, snap closures and a contoured hem finish of this urban essential.

FABRICATION: 60% Cotton/40% Polyester, 4.57oz/yd² (USA)/ 155gsm (CDN)

MEN'S SIZING: S-5XL

WOMEN'S SIZING: XS-2XL
(Carbon/Black & Red/Black XS-3XL)

DECORATION OPTIONS:

E

HT

LP



M'S & W'S: CARBON/BLACK



M'S & W'S: BLUE/BLACK



M'S & W'S: RED/BLACK

CAMBRIDGE
L/S SHIRTS

SLW-1 | SLW-1W



Collar Stand
Maintains collar shape and structure,
even after washing



Button Down Collar
Secures the collar tips in place
and keeps the collar standing



NEW

CAMBRIDGE L/S SHIRT

SLW-1 | SLW-1W

MSRP **\$60.00**

Premium easy care cotton-poly woven flannel long sleeve shirt features a tailored collar, contoured curve hem design, for casual wear settings and chest pockets for added functionality and style.

FABRICATION: 60% Cotton/40% Polyester, 3.72oz/yd² (USA)/ 126gsm (CDN)

MEN'S SIZING: S-3XL (Charcoal S-5XL)

WOMEN'S SIZING: XS-2XL
(Charcoal XS-3XL)

**DECORATION
OPTIONS:**



M'S & W'S: CHARCOAL



M'S & W'S: NAVY



M'S & W'S: STONE

BLUERIDGE DENIM SHIRT

SFD-1 | SFD-1W



**Flapped Chest Pockets
with Button Closures**
Conveniently secure
personal items



Cuff Placket with Button Closures
The placket is securely fashioned
together by a 4-hole button

Full Front Button Closures

Full front buttons provide both secure closure and added styling

Flapped Chest Pockets with Button Closures
Conveniently secure personal items

Cuff Placket with Button Closures

The placket is securely fashioned together by a 4-hole button

Contoured Hem

Design that provides freedom of movement with a fashionably tailored fit

BLUERIDGE DENIM SHIRT

SFD-1 | SFD-1W

MSRP **\$70.00**

Anything but conventional. Cleaner, slimmer lines deliver a refreshing take on the traditional denim shirt. Understandably in demand, this staple has a clean, unforced finish that casually creates an eye-catching, cultured look. Lightly washed with flapped chest pockets, button closures and a contoured hem finish off this urban essential.

FABRICATION: 100% Cotton Denim, 5.4Oz/yd² (USA)/183gsm (CDN)

MEN'S SIZING: XS-5XL

WOMEN'S SIZING: XS-3XL

DECORATION OPTIONS:



M'S & W'S: BLACK



M'S & W'S: LIGHT DENIM

LOGAN SNAP FRONT SHIRT

SFX-1 | SFX-1W



Chest Pocket Flaps with Snaps
Conveniently secure personal items



Cuff with Snaps
Provides a more secure fit at the wrist and added style



Chest Pocket Flaps with Snaps
Conveniently secure personal items

Contoured Hem
Allows the shirt to be worn out or tucked in

Cuff with Snaps
Provides a more secure fit at the wrist and added style

LOGAN SNAP FRONT SHIRT

SFX-1 | SFX-1W

MSRP **\$60.00**

Urban culture mashed with a sharp eye for fashion defines this lightweight button-up with classic plaid patterns. A snap-front design with two chest pockets made from an easy-care cotton/poly blend makes this a sought after essential.

FABRICATION: 60% Cotton, 40% Polyester, 4.57oz/yd² (USA) / 155gsm (CDN)

MEN'S SIZING: XS-5XL

WOMEN'S SIZING: XS-2XL (Black/Red Plaid, Royal Plaid & Carbon Plaid XS-3XL)

DECORATION OPTIONS:



M'S & W'S:
CARBON PLAID

M'S & W'S: NAVY
PLAID

M'S & W'S: BLACK/
RED PLAID

M'S & W'S:
TITANIUM PLAID

M'S & W'S: BLACK/
DOLPHIN

M'S & W'S:
EARTH/NAVY

M'S & W'S:
ROYAL PLAID



NEW

DAKOTA S/S SHIRT

SFV-1

MSRP **\$50.00**

Versatile urban outdoor styling defines this lightweight button-up with classic plaid patterns. Classic 4-hole button with single chest pocket made from easy care 100% cotton makes this a sought after essential for work or play.

FABRICATION: 100% Cotton, 3.30oz/yd² (USA)/ 112gsm (CDN)

MEN'S SIZING: XS-3XL

**DECORATION
OPTIONS:**



M'S: CARBON/BLACK



M'S: ROYAL/NAVY

AZORES QUICK DRY SHIRT

QRT-1

Short sleeve shirt built for work or play with ultra-lightweight, quick to dry, stretch-woven dobby fabric. Featuring a tailored collar and contoured seaming for maximum comfort. The women's invisible zippered pocket conveniently secures personal items.



H2X DRY
MOISTURE MANAGEMENT

Draws moisture away from the skin, helping to maintain optimal body comfort



Side Pocket with Invisible Zipper (W's)
Provide secure storage for valuables

Air Flow Technology

NEW

AZORES QUICK DRY SHIRT

QRT-1 | QRT-1W

MSRP **\$50.00**

ADDITIONAL FEATURES:

- Full Front Button Closure
- Single Chest Pocket (M's)
- Contoured Hem
- Flat Felled Side Seams
- Contoured Seaming (W's)

FABRICATION: 100% Polyester, 2.86oz/yd² (USA)/ 97gsm (CDN)

MEN'S SIZING: S-3XL

WOMEN'S SIZING: XS-2XL

DECORATION OPTIONS:

(E) (HT) (LP)



M'S & W'S: BLACK



M'S & W'S: HEATHER GREY

Side Pocket with Invisible Zipper (W's)
Provide secure storage for valuables

STORMTECH.CA

YUKON CREW PULLOVER

CFW-1 | CFW-1W

Featuring hardwearing, cotton-rich performance fleece, the Yukon Crew allows for easy movement, and maintains a smooth silhouette in any position. A perfect fit for work or play, the ribbed waistband and cuffs provide ultimate comfort.



Ribbed V-Stitch Styling
Purpose is to help collar stretch over head without losing shape



2x2 Rib Crew Neck Collar Cuff and Hem
Rib knit construction provides enhanced comfort fit and durability

NEW

YUKON CREW PULLOVER

CFW-1 | CFW-1W

MSRP **\$60.00**

ADDITIONAL FEATURES:

- Tonal Cover Stitching
- Set-in Sleeves

FABRICATION: 70% Cotton/ 30% Polyester, 11.8oz/yd² (USA)/ 400gsm (CDN)

MEN'S SIZING: S-5XL

WOMEN'S SIZING: XS-2XL

DECORATION OPTIONS:



M'S & W'S: BLACK



M'S & W'S: CARBON HEATHER



M'S & W'S: PEAT

A scenic landscape photograph of a mountain valley. The sun is shining brightly from the upper right, creating a strong sunburst effect with rays of light across the sky and the green hills. The foreground shows a grassy slope with some rocks. In the distance, a winding road and a small body of water are visible in the valley. The overall mood is bright and outdoorsy.

SPRING 2021

POLOS & PREMIUM TEES

With roots in the outdoors, STORMTECH's polos and premium tees is comprised of innovative renditions of classic styles to create a contemporary fusion of both urban and outdoor styling.





SPRING 2021 POLOS & PREMIUM TEES

CASUAL COTTON COLLECTION



1. RAILTOWN TEE
TG-2 | TG-2W

2. NEWTON HAT
BRC-2

3. CUPERTINO RFID PASSPORT WALLET
PWX-1

3-Button Placket (M's)

Classic polo styling which can be fully buttoned up or down

UPF 50+
LIV SUN
PROTECTION

Technology that protects the skin from the sun's rays

Open-V 2-Button Placket (W's)

Provides modern, premium styling, flexibility, and comfort

Hem Side Slits

At the bottom of side seams add fashion detail, comfort and ease of movement

RAILTOWN POLO

TGP-1 | TGP-1W

MSRP **\$35.00**

The Railtown Polo with UPF protection makes it a go-to summer basic. With its contrast collar and sleeve cuffs, hem side slits and collar stand, this preppy style can be dressed up or down, giving it full marks in the versatility stakes. Little wonder this summer must-have is singled out by those with unpretentious, cultured taste.

FABRICATION: 60% Cotton, 40% Polyester Single Jersey, 4.42oz/yd² (USA) / 150gsm (CDN)

MEN'S SIZING: S-3XL

WOMEN'S SIZING: XS-2XL

**DECORATION
OPTIONS:**



M'S & W'S: BLACK/GREY HEATHER



M'S & W'S: NAVY/WHITE

NANTUCKET STRETCH PIQUE POLO

CTP-2 | CTP-2W

Hardwearing stretch
pique construction 95%
Cotton/5% Spandex, button
placket polo. Side slits at the
hem provide a relaxed fit,
while the pill resistant fabric
leaves the garment looking
newer for longer.



Classic 5-Button Placket (W's)
Classic polo styling that is easy
to wear and easy to style



Rib Knit Collar and Cuff Hem
Rib knit construction provides enhanced durability and comfort

Classic 3-Button Placket (M's)
For classic polo styling



Pique Fabrication
A classic polo staple elevating style with texture



Classic 5-Button Placket (W's)
Classic polo styling that is easy to wear and easy to style

Hem Side Slits
At the bottom of side seams add fashion detail, comfort and ease of movement

NEW

NANTUCKET STRETCH PIQUE POLO

CTP-2 | CTP-2W

MSRP **\$40.00**

FABRICATION: (Solid) 95% Cotton/ 5% Spandex, 6.19oz/yd² (USA)/ 210gsm (CDN)
(Charcoal Heather) 57% Cotton/ 38% Spandex/ 5% Spandex, 6.19oz/yd² (USA)/ 210gsm (CDN)

MEN'S SIZING: S-3XL
(Black S-5XL)

WOMEN'S SIZING: XS-2XL
(Black XS-3XL)

DECORATION OPTIONS:



M'S & W'S: BLACK



M'S & W'S: CHARCOAL HEATHER



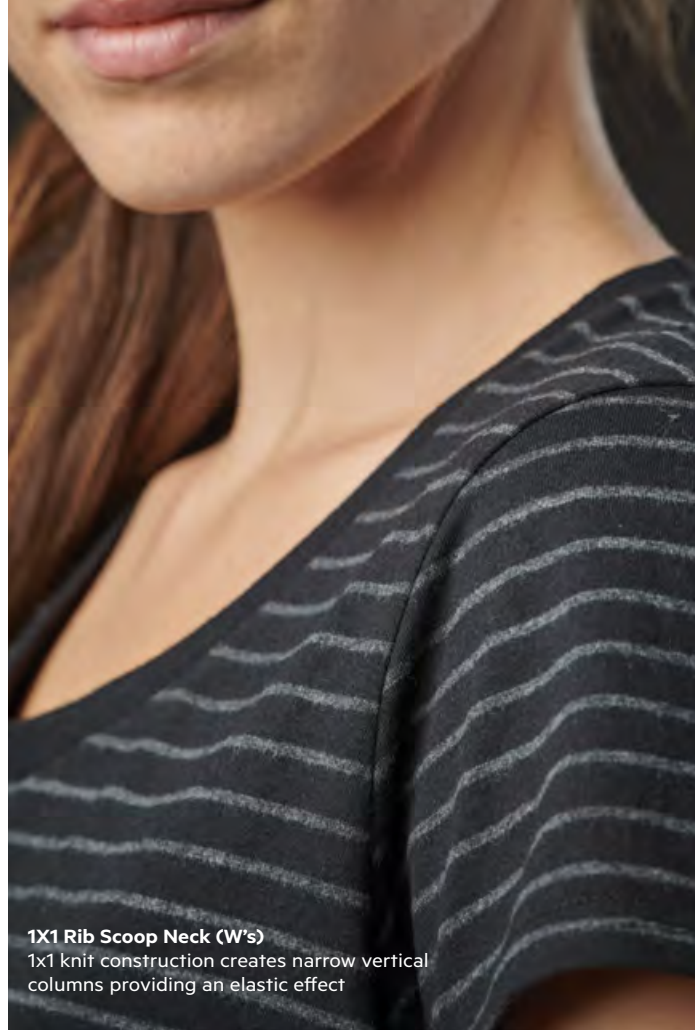
M'S & W'S: INDIGO



M'S & W'S: WHITE

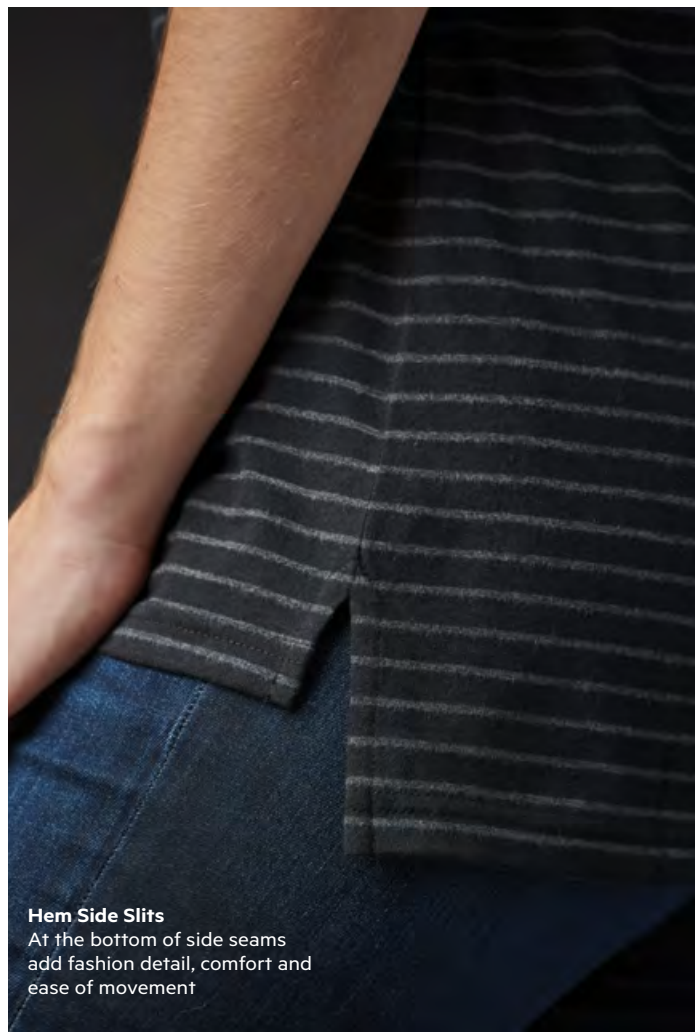
RAILTOWN
CREW NECK TEE

TG-2 | TG-2W



1X1 Rib Scoop Neck (W's)

1x1 knit construction creates narrow vertical columns providing an elastic effect



Hem Side Slits

At the bottom of side seams add fashion detail, comfort and ease of movement

1x1 Rib Crew Neck (M's)

Rib knit construction provides enhanced durability and comfort at the neck opening

1X1 Rib Scoop Neck (W's)

1x1 knit construction creates narrow vertical columns providing an elastic effect

UPF 50+ **UV SUN**
PROTECTION
Technology that protects the skin from the sun's rays

Hem Side Slits

At the bottom of side seams add fashion detail, comfort and ease of movement

RAILTOWN CREW NECK TEE

TG-2 | TG-2W

MSRP **\$25.00**

Always in mode, always a fundamental style staple. This tee is eternal for good reason; it is versatile, comfortable, and eager to help you tick off your casual summer to-do list. The Railtown Crew Neck Tee, with its taped neck and shoulder seams and subtle hem side slits exudes a calm air, while the arresting design of the UPF fabric will make you a stand-out presence.

FABRICATION: 60% Cotton, 40% Polyester Single Jersey, 4.42oz/yd² (USA)/150gsm (CDN)

MEN'S SIZING: S-3XL

WOMEN'S SIZING: XS-2XL

DECORATION OPTIONS:



M'S & W'S: BLACK/GREY HEATHER



M'S & W'S: NAVY/WHITE

TORCELLO CREW NECK TEE

TG-1

There is a tee in carefree. It's an outward display of your fun-loving approach to life. The UPF protected Torcello Crew Neck Tee is alluring in its simplicity with a rib crew neck and taped styling to complement your good form and mood. It brings on-point fashion to an essential summer staple. That's happiness down to a Tee.

UPF 50+ UV SUN PROTECTION
Technology that protects the skin from the sun's rays



Contour Shaped Hem with Side Slits (W's)
Ergonomic design gives range and tailored fit, while side slits bring comfort and ease of movement

TORCELLO CREW NECK TEE

TG-1 | TG-1W

MSRP **\$20.00**

ADDITIONAL FEATURES:

- 1x1 Rib Crew Neck (M's)
- 1x1 Rib Scoop Neck (W's)
- Taped Neck and Shoulder Seams
- Hem Side Slits (M's)

FABRICATION: 60% Cotton, 40% Polyester Single Jersey, 4.42oz/yd² (USA)/150gsm (CDN)

MEN'S SIZING: S-3XL (Black, Navy & White S-5XL)

WOMEN'S SIZING: XS-2XL (Black, Navy & White XS-3XL)

DECORATION OPTIONS:



M'S & W'S:
BLACK

M'S & W'S:
GRAPHITE
HEATHER

M'S & W'S:
NAVY

M'S & W'S:
DENIM
HEATHER

M'S & W'S:
WHITE

TORCELLO 3/4 TEE

TG-3W

Another outward display of your fun-loving approach to life. The UPF protected Torcello 3/4 Tee is alluring in its simplicity with a 1x1 rib scoop neck and taped styling to complement your good form and mood. It brings on-point fashion to an essential summer staple. That's happiness down to a Tee.



Boat Neck Silhouette

Offers a flattering and feminine look while maintaining a classic design



UPF 50+ UV SUN PROTECTION

Technology that protects the skin from the sun's rays

Hem Side Slits

At the bottom of side seams add fashion detail, comfort and ease of movement

TORCELLO 3/4 TEE

TG-3W

MSRP **\$20.00**

ADDITIONAL FEATURES:

- 3/4 Length Sleeves
- Contoured Silhouette

FABRICATION: 60% Cotton, 40% Polyester Single Jersey, 4.42oz/yd² (USA)/150gsm (CDN)
(Ash Heather) 95% Cotton, 5% Viscose Single Jersey, 4.42oz/yd² (USA)/150gsm (CDN)

WOMEN'S SIZING: XS-2XL

DECORATION OPTIONS:



W'S: BLACK



W'S: ASH HEATHER

TORCELLO
L/S HENLEY
TGH-1 | TGH-1W



Classic 3-Button Placket
For classic polo styling



Contour Shaped Hem with Side Slits (W's)
Ergonomic design gives range and tailored fit, while side slits bring comfort and ease of movement



NEW

TORCELLO L/S HENLEY

TGH-1 | TGH-1W

MSRP **\$30.00**

Always a fundamental style staple. This Torcello L/S Henley is eternal for good reason; it is versatile, comfortable, and eager to help you tick off your casual spring to-do list. Taped neck seams and subtle, contoured hem with side slits (W's) exudes a calm air with a classic henley placket.

FABRICATION: 60% Cotton/ 40% Polyester Single Jersey, 4.42oz/yd² (USA)/ 150gsm (CDN)

MEN'S SIZING: S-3XL (Black S-5XL)

WOMEN'S SIZING: XS-2XL (Black XS-3XL)

DECORATION OPTIONS:



M'S & W'S: BLACK



M'S & W'S: GRAPHITE HEATHER



M'S & W'S: WHITE

TORCELLO L/S TEE

TGL-1W

An outward display of your fun-loving approach to life. The UPF protected Torcello L/S Tee is alluring in its simplicity with a rib crew neck and taped styling to complement your good form and mood. It brings on-point fashion to an essential spring staple. That's happiness down to a Tee.



UPF 40+
UV/SUN PROTECTION

Technology that protects the skin from the sun's rays



Contour Shaped Hem with Side Slits (W's)
Ergonomic design gives range and tailored fit, while side slits bring comfort and ease of movement

NEW

TORCELLO L/S TEE

TGL-1 | TGL-1W

MSRP **\$30.00**

ADDITIONAL FEATURES:

- 1x1 Rib Crew Neck Collar and Cuff (M's)
- 1x1 Rib Scoop Neck Collar (W's)
- Taped Neck Seams
- Set-in Sleeves

FABRICATION: 60% Cotton/ 40% Polyester Single Jersey, 4.42oz/yd² (USA)/ 150gsm (CDN)

MEN'S SIZING: S-3XL
(Black, S-5XL)

WOMEN'S SIZING: XS-2XL
(Black XS-3XL)

DECORATION OPTIONS:



M'S & W'S: BLACK



M'S & W'S: GRAPHITE HEATHER



M'S & W'S: WHITE

TORCELLO TANK TOP

TGT-1W

Ultra-soft cotton-poly blend fabric is perfectly suited to your fun-loving approach to life. The UPF protected Torcello Tank Top is alluring in its simplicity with a scoop neck and styling to complement your good form and mood. It brings on-point fashion to an essential summer staple.



Boat Neck Silhouette

Offers a flattering and feminine look while maintaining a classic design

UPF 40+ UV SUN PROTECTION

Technology that protects the skin from the sun's rays

Dropped Back

Ergonomic design that provides freedom of movement with a fashionably tailored fit trending look

Extra Long and Relaxed Fit

Designed to wear with a variety of styles to create your own personal trending look



BLACK

NEW

TORCELLO TANK TOP

TGT-1W

MSRP **\$18.00**

ADDITIONAL FEATURES:

- Contoured Shaped

FABRICATION: 60% Cotton/ 40% Polyester Single Jersey, 4.42oz/yd² (USA)/ 150gsm (CDN)

WOMEN'S SIZING: XS-2XL

DECORATION OPTIONS:

(E) (HT) (LP)

SPRING 2021 POLOS & PREMIUM TEES

ACTIVE PRINT COLLECTION



GULF STREAM POLO
VP-2



V-Neck Opening (W's)

Buttonless V-neck design lays flat while offering a flattering silhouette



Hem Side Slits

At the bottom of side seams add fashion detail, comfort and ease of movement

H2X DRY
MOISTURE MANAGEMENT

Draws moisture away from the skin, helping to maintain optimal body comfort

Collar Stand (M's)
Maintains collar shape and structure, even after washing

Self Fabric Non-Roll Collar

Non-roll construction prevents collar points from turning up or rolling

V-Neck Opening (W's)
Buttonless V-neck design lays flat while offering a flattering silhouette

Contoured Seaming
Provides a closer to body fit and sleek silhouette

Hem Side Slits
At the bottom of side seams add fashion detail, comfort and ease of movement

UPF 50+ UV SUN PROTECTION

Technology that protects the skin from the sun's rays

Laser-Cut Bonded Placket
Panels are precisely cut and bonded for maximum durability



NEW

GULF STREAM POLO

VP-2 | VP-2W

MSRP **\$40.00**

Bringing our passion for design to a polo collection. The Gulf Stream Polo provides a mechanical stretch fabric for superior comfort and unrestricted movement, coupled with a subtle sublimated print, H2X-DRY® moisture wicking technology, laser-cut bonded placket, snag resistant fabric, and UPF sun protection.

FABRICATION: 100% Polyester, 5.13 oz/yd² (USA)/ 174gsm (CDN)

MEN'S SIZING: S-3XL (Carbon S-5XL)

WOMEN'S SIZING: XS-2XL

DECORATION OPTIONS:



M'S & W'S: CARBON

M'S & W'S: NAVY

WAVELENGTH POLO

NXT-1W

Bringing our passion for design to a polo collection. The Wavelength Polo provides a mechanical stretch fabric for superior comfort and unrestricted movement, coupled with a low profile sublimated print, H2X-DRY® moisture wicking technology, snag resistant fabric, and UPF sun protection.



H2X-DRY
MOISTURE MANAGEMENT

Draws moisture away from the skin, helping to maintain optimal body comfort



UPF 30+ **UV SUN**
PROTECTION

Technology that protects the skin from the sun's rays

WAVELENGTH POLO

NXT-1 | NXT-1W

MSRP **\$50.00**

ADDITIONAL FEATURES:

- Snag Resistant Fabric
- Classic 3-Button Placket (M's)
- Open-V 3-Button Placket (W's)
- Hem Side Slits
- Collar Stand
- Self-Fabric Collar
- Mechanical Stretch

FABRICATION: 100% Polyester, 5.13oz/yd² (USA) / 174gsm (CDN)

MEN'S SIZING: S-3XL
(Black/Titanium S-5XL)

WOMEN'S SIZING: XS-2XL

DECORATION OPTIONS:



M'S & W'S:
BLACK/
ELECTRIC BLUE

M'S & W'S:
BLACK/BRIGHT
RED

M'S & W'S:
BLACK/
TITANIUM

M'S & W'S:
BLACK/KIWI

REFLEX POLO

DXP-1W

Style, function, quality and fit defines the Reflex Polo. The over-sized print makes a statement and H2X-DRY® fabric wicks moisture away from the skin for optimal comfort. Collar stand allows retention of shape and the side slits allow for ease of movement.



H2XDRY
MOISTURE MANAGEMENT

Draws moisture away from the skin, helping to maintain optimal body comfort



UPF 30+ **UV SUN**
PROTECTION
Technology that protects the skin from the sun's rays

REFLEX POLO

DXP-1 | DXP-1W

MSRP **\$50.00**

ADDITIONAL FEATURES:

- Snag Resistant Fabric
- Classic 3-Button Placket
- Hem Side Slits (W's)
- Collar Stand
- Self-Fabric Collar
- Mechanical Stretch

FABRICATION: 100% Polyester, 5.13oz/yd² (USA) / 174gsm (CDN)

MEN'S SIZING: S-3XL
(Dolphin S-5XL)

WOMEN'S SIZING: XS-2XL

DECORATION
OPTIONS:



M'S & W'S: DOLPHIN

M'S & W'S: AZURE BLUE

M'S & W'S: BRIGHT RED

M'S & W'S: KIWI

SPRING 2021

VIRALOFF® FACE MASKS & ACCESSORIES

Paired with our premium technical apparel, our best-in-class protective face masks offer all-day comfort for high output activities. The STORMTECH masks and associated accessories combine fashion with function by offering an ergonomic shape with streamlined design, coupled with enhanced comfort, adjustable fit, and elevated protection. Stay safe. Stay healthy. Stay active.



ViralOff
POLYGIENE TECHNOLOGY





FUSION FACE MASK
CMK-6



OASIS TOUCH SCREEN GLOVE
GLX-1



OASIS PERFORMANCE GAITER
CMK-7



OASIS PERFORMANCE BANDANA
CMK-5





ViralOff
POLYGIENE TECHNOLOGY

ViralOff® is an antimicrobial treatment added to textiles to protect the product from contamination. For best performance and sustainability, wash less, only when needed.



NEW

FUSION FACE MASK

CMK-6

MSRP **\$8.00**

The mask is a two-layer with the extra layer of ViralOff protection added, this shows a 99% reduction of many different viruses, on a treated material, within 2 hours. The two layers masks are best breathable face mask options highly in demand for many people who feel that their breathing is restricted in three or more layers.

FABRICATION: 100% Cotton

SIZING: Small 6" W X 5.5" H
Large 7" W X 5.5" H

DECORATION OPTIONS:





ViralOff
POLYGIENE TECHNOLOGY

ViralOff® is an antimicrobial treatment added to textiles to protect the product from contamination. For best performance and sustainability, wash less, only when needed.

**Incredibly Comfortable
Poly Spandex**
Designed for everyday
use without compromising
protection

**ViralOff® Antimicrobial
Treatment**
Added antimicrobial
treatment to protect
the product from
contamination. Wear
more, wash less

Touch Screen Friendly
With your phone,
smartwatch or tablet

Multi-functional use
Public transport, grocery
stores, Gym, ATM, self
checkout screens



NEW

OASIS TOUCH SCREEN GLOVE

GLX-1

MSRP **\$20.00**

Incredibly comfortable poly spandex construction delivers a lightweight and warm stretch fit glove that is touch-screen compatible so you can keep your hands warm while using your electronic devices. ViralOff® antimicrobial textile treatment inactivates pathogens, reduces contamination risk, and allows you to wear your gloves longer with less washing.

FABRICATION: 88% Polyester/ 12% Spandex

SIZING: S-L

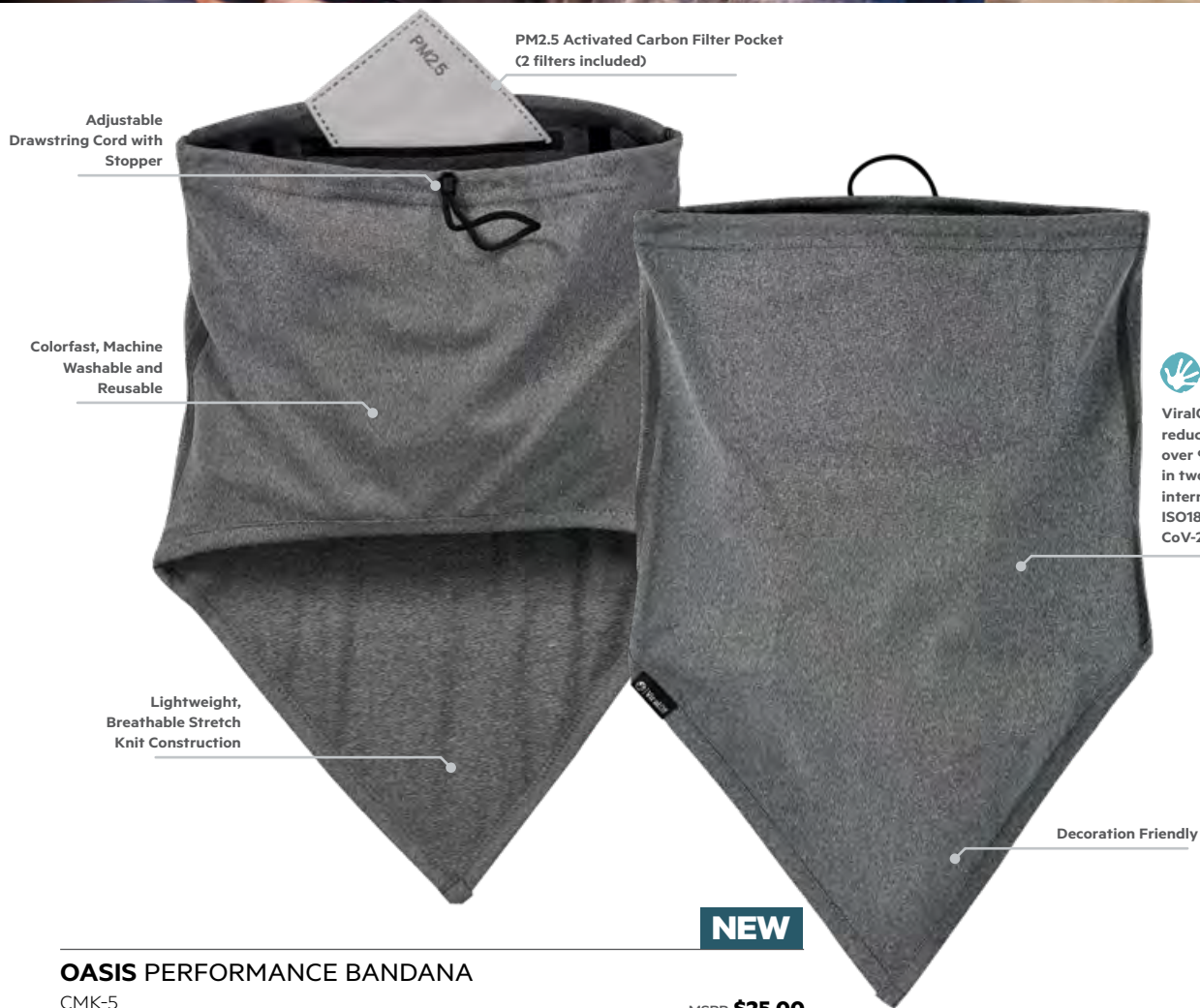
DECORATION OPTIONS:



BLACK



GREY HEATHER



ViralOff® is proven to reduce tested viruses* by over 99% on the material in two hours as per international standard ISO18184:2019 (SARS-CoV-2, H3N2, H1N1)

NEW

OASIS PERFORMANCE BANDANA

CMK-5

MSRP **\$25.00**

Wear more – wash less with ViralOff® antimicrobial treated fabric. The world leader in antimicrobial odor control technologies now provides a practical solution for protective face coverings: ViralOff® is an antimicrobial textile treatment that inactivates pathogens and protects the product from contamination while remaining fresh and skin friendly.

FABRICATION: Bandana: 88% Polyester/ 12% Spandex

PM 2.5 filter: Non-woven fabric/Meltblown/Activated Carbon/Meltblown/Non-woven fabric

SIZING: 14" L x 10"W

DECORATION OPTIONS:



BLACK



GRANITE HEATHER



ViralOff® is proven to reduce tested viruses* by over 99% on the material in two hours as per international standard ISO18184:2019 (SARS-CoV-2, H3N2, H1N1)

OASIS PERFORMANCE GAITER

CMK-7

MSRP **\$25.00**

Wear more – wash less with ViralOff® antimicrobial treated fabric. The world leader in antimicrobial odor control technologies now provides a practical solution for protective face coverings: ViralOff® is an antimicrobial textile treatment that inactivates pathogens and protects the product from contamination while remaining fresh and skin friendly.

FABRICATION: Gaiter: 88% Polyester/ 12% Spandex

PM 2.5 filter: Non-woven fabric/Meltblown/Activated Carbon/Meltblown/Non-woven fabric

SIZING: 13" L x 10"W

DECORATION OPTIONS:



BLACK



GRANITE HEATHER



STORMTECH®

nurtured by nature

WWW.STORMTECH.CA

 @stormtech1977  @stormtechcorporate

