

A man and a woman are standing side-by-side, wearing olive green clothing. The man on the left has curly hair and is wearing a V-neck top and cargo pants with a shoulder strap. The woman on the right has her hair pulled back and is wearing a zip-up jacket and pants, with a watch on her left wrist. They are positioned in front of a red wooden wall and green foliage.

BARCO®

FALL 2023

JULY - DECEMBER

BARCO®
Made to Matter

TABLE OF CONTENTS

08	GREY'S ANATOMY™ BY BARCO SPANDEX STRETCH
22	GREY'S ANATOMY™ BY BARCO IMPACT
24	GREY'S ANATOMY™ BY BARCO EVOLVE *NEW*
34	GREY'S ANATOMY™ BY BARCO
42	BARCO® UNIFY
50	BARCO® ONE
62	SKECHERS™ BY BARCO™
74	LABCOATS
82	KEY PROMOTIONAL DATES



ON THE COVER

GREY'S ANATOMY™ BY BARCO EVOLVE ***NEW***

Men's Top - GSST179 Journey Top

Men's Pants - GSSP626 Voyager Jogger

Women's Warm-Up - GSSW886 Virtue Warm-Up

Women's Top - GSST180 Rhythm Top

Women's Pants - GSSP625 Terra Jogger

barcomade.com

Dear Valued Partners,

As the healthcare market continues to evolve and retail becomes even more competitive, our commitment to serving you, our loyal retail partners, is stronger than ever. For Fall 2023, Barco will continue to offer new and innovative ways to provide the very best products and services to help you grow your business — we are evolving with you.

We are proud to introduce Grey's Anatomy by Barco Evolve, a continuation of Barco's legacy of innovation centered around caring for and honoring the healthcare community. This collection highlights sleek simplicity with modern designs, clean fits, and sustainable fabrics. It is designed for the new generation of healthcare professionals as they begin their journey of caring for both patient and planet.

The following pages are also filled with on-trend fashion colors, exceptional styling details, and industry-leading fabric technology across our family of brands. The Fall 2023 collection offers cutting-edge product assortments, bringing exciting new designs and unsurpassed quality to the valued customers you serve.

We continue to seek new ways to generate lasting value for our retail partners by helping to simplify marketing initiatives in store, online, and on social platforms. Our Digital Marketing Resource Center is constantly updated with even more marketing solutions to help you grow your business, including updated brand toolkits, seasonal web banners, social media posts, and more. Check out page 4 for more details.

We look forward to an exciting season and continued partnership as we work together toward our shared goal of serving the healthcare professionals who so courageously serve others.

With heartfelt gratitude,

Ron Wagenseil

President / Chief Executive Officer

BARCO®

Marketing, Simplified.

EXPLORE BARCO'S DIGITAL MARKETING RESOURCE CENTER

To access, scan the
QR CODE or login to
B2B.BARCOUNIFORMS.COM



Our marketing resource center provides everything you need to sell more in your stores, ecommerce site, and social platforms. Packed with an array of marketing materials: seasonal catalogs, marketing collateral, digital brand toolkits, high-quality product & lifestyle photography, product content, and more!

PLUS, updated support for SellersCommerce and The Uniform Solution platforms.

 facebook.com/barcouniforms

 instagram.com/barcomade

 twitter.com/BarcoUniforms

HOW TO MEASURE

Take all measurements over undergarments using standard measuring tape held in a relaxed straight line.

Chest/Bust: Place measuring tape under the arms to measure the distance around the shoulder blades and the fullest part of the bust/chest. Do not hold the tape too tight.

Waist: Place measuring tape around the natural waistline.

Hip: Stand with feet a few inches apart and measure around the fullest part of your hips wearing your undergarments.

Inseam: Measure from the crotch to the desired length of the pant, breaking at the top of the shoe and just above the heel in the back. Appropriate shoes should be worn.



FIT SIZE GUIDE

BASED ON YOUR BODY MEASUREMENTS

Women's/Women's Labs

Size	XXS	XS	S	M	L	XL	2XL	3XL	4XL	5XL
	00	0-2	4-6	8-10	12-14	16-18	20-22	24-26	28-30	32-34
Bust	31-32	33-34	35-36	37-39	40-42	43-45	46-48	50-52	54-56	58-60
Waist	23½-24½	25½-26½	27½-28½	29½-31½	32½-34½	35½-37½	39-41	43-45	47-49	51-53
Hip	34-35	36-37	38-39	40-42	43-45	46-48	49-51	53-55	57-59	61-63

Men's

Size	XXS	XS	S	M	L	XL	2XL	3XL	4XL	5XL
	29-31	32-34	35-37	38-40	42-44	46-48	50-52	54-56	58-60	62
Chest	30-32	33-35	36-38	39-41	43-45	47-49	51-53	55-57	59-61	63-65
Waist	23½-25½	26½-28½	29½-31½	32½-34½	36½-38½	40½-42½	44½-46½	48½-50½	52½-54½	56½-58½
Hip	30½-31½	33½-34½	36½-37½	38½-40½	42½-44½	46½-48½	49-51	53-55	57-59	61-63

Men's Labs

Size	32	34	36	38	40	42	44	46	48	50	52	54	56
Chest	32	34	36	38	40	42	44	46	48	50	52	54	56
Waist	26	28	30	32	34	36	38	40	42	44	46	48	50

Unisex/Unisex Labs (we recommend to size down for women)

Size	XXS	XS	S	M	L	XL	2XL	3XL	4XL	5XL
	29	30-32	34-36	38-40	42-44	46-48	50-52	54-56	58-60	62
Chest	30-32	33-35	36-38	39-41	43-45	47-49	51-53	55-57	59-61	63-65
Waist	23½-25½	26½-28½	29½-31½	32½-34½	36½-38½	40½-42½	44½-46½	48½-50½	52½-54½	56½-58½
Hip	30½-31½	33½-34½	36½-37½	38½-40½	42½-44½	46½-48½	49-51	53-55	57-59	61-63

BARCO[®] BRANDS

GREY'S ANATOMY™

**GAME
CHANGER**

GREY'S ANATOMY™
signature
©ABC Signature
PROFESSIONAL WEAR
BY BARCO
+ SPANDEXSTRETCH



**Spandex
Stretch**



**Soil
Release**



**Extreme
Comfort**



**Moisture
Wicking**

**IMPACTFUL
DETAILS**

GREY'S ANATOMY™
signature
©ABC Signature
PROFESSIONAL WEAR
BY BARCO
IMPACT



**Spandex
Stretch**



**Soil
Release**



**Extreme
Comfort**



**Moisture
Wicking**

**AUTHENTIC
STYLE**

GREY'S ANATOMY™
signature
©ABC Signature
PROFESSIONAL WEAR
BY BARCO



**Moisture
Wicking**



**Easy
Care**



**Super-Soft
Touch**



**All-Day
Freshness**

**CARING FOR
PATIENT AND
PLANET**

GREY'S ANATOMY™
signature
©ABC Signature
PROFESSIONAL WEAR
BY BARCO
EVOLVE
SUSTAINABLESTRETCH



**360°
Spandex Stretch**



**Eco-Friendly
Fabric**



**Wrinkle
Release**



**Moisture
Wicking**

BARCO[®]

**SUSTAINABLE
PERFORMANCE**

BARCO[®]
one
heart • purpose • life



**5 Recycled Bottles
Per Garment**



**4-Way
Stretch**



**Moisture
Wicking**



**Anti
Static**

**MADE TO
UNITE**

BARCO
UNIFY



**Wrinkle
Release**



**360°
Spandex Stretch**



**Moisture
Wicking**



**Super-Soft
Touch**

SKECHERS™

**SUSTAINABLE
VALUE**

SKECHERS
Barco



**Eco-Friendly
Fabric**



**4-Way
Stretch**



**Moisture
Wicking**



**Comfort
Included**

New Fashion Colors

FALL



1581 Coral Love



2263 Slate Purple



2348 Fern

2148 Desert Rouge



2262 Bright Turmeric



1579 Magenta Rush



1293 Royal Lilac

New Fall Color

1581 Coral Love

GREY'S ANATOMY™

abc signature

© ABC Signature

PROFESSIONAL WEAR
BY BARCO

+ SPANDEXSTRETCH

PRIMARY FABRIC CONTENT

74% Polyester | 23% Rayon | 3% Spandex Twill



Spandex-Stretch



Soil Release



Extreme Comfort



Moisture-Wicking

BARCO
Made to Matter



GREY'S ANATOMY™
signature
© ABC Signature
PROFESSIONAL WEAR
BY BARCO
+ **SPANDEX STRETCH**

❖ **NOT SOLD ON AMAZON**

All Styles Main Fabric
74% Polyester
23% Rayon
3% Spandex twill

**GVST028
Bree Tuck-In Top**
1-pocket, knit V-neck
with light grey badge
loop and shaped high-
low hem

*Sizes: XS - 3XL
CB: 25.5"
Color shown:
1581 Coral Love*

*Knit Accent Content:
88% Polyester
12% Spandex*

**GRSP500
Kim Pant**
3-pocket, logo plush
elasticback waistband,
zip cargo pocket

*Sizes: XXS - 5XL, I: 31"
XXSP - 2XLP, I: 29"
XXST - XLT, I: 33.5"
Color shown:
1581 Coral Love*

NEW COLORS

Galaxy

Coral Love

See page 16-21
for additional information



NEW COLORS

Galaxy

Coral Love

See page 16-21
for additional information

GRST011 Emma Top

4-pocket, V-neck
with angled seams

Sizes: XXS - 5XL

CB: 26"

Color shown:

1581 Coral Love

GRSP537 Eden Jogger

5-pocket, knit rib
drawcord waistband,
zipper front pockets,
double single cargo,
ribbed cuff jogger

Sizes: XXS - 3XL, I: 29"

XXSP - 2XLP, I: 27"

XST - XLT, I: 31"

Color shown:

1581 Coral Love

GREY'S ANATOMY™

abc signature

© ABC Signature

PROFESSIONAL WEAR

BY BARCO

+ SPANDEX STRETCH

❖ NOT SOLD ON AMAZON

All Styles Main Fabric

74% Polyester

23% Rayon

3% Spandex twill



GREY'S ANATOMY™

abc signature
© ABC Signature

PROFESSIONAL WEAR
BY BARCO

+ SPANDEX STRETCH

❖ NOT SOLD ON AMAZON

All Styles Main Fabric

74% Polyester

23% Rayon

3% Spandex twill

**GRST079
Murphy Top**

2-pocket, V-neck
shaped chest pocket,
zipper sleeve pocket
top

Sizes: XS - 5XL

CB: 29"

*Color shown:
503 Galaxy*

**GRSP550
Murphy Jogger**

5-pocket, rib knit with
plush elastic embedded
waistband, two-tone
drawcord, front zipper
fly, zipper front pockets,
angled single double
cargo pocket, single back
pocket, rib knit cuff jogger

Sizes: XS - 5XL, I: 29"

XSS - 2XLS, I: 27"

XST - XLT, I: 31"

*Color shown:
503 Galaxy*

NEW COLORS

Galaxy

*See page 16-21
for additional information*



NEW COLORS

Galaxy

See page 16-21
for additional information

GRSW871

React Warm-up

5-pocket knit stand collar with zipper front, chest patch, zipper welt pocket, chin guard, and knit cuff warm-up

Sizes: XS - 5XL

CB: 29"

Color shown:
23 Indigo

Knit Accents Content:
94% Polyester
6% Spandex

GRSP617

Hudson Pant **NEW**

6-pocket, rib knit with plush elastic embedded waistband, two-tone drawcord, front zipper fly, on-seam front pockets, side leg panel with top entry cargo pockets, welt back pocket, slim straight pant

Sizes: XS - 5XL, I: 32"

XSS - 2XLS, I: 30"

XST - 2XLT, I: 34"

Color shown:
23 Indigo

GREY'S ANATOMY™

abc signature
© ABC Signature

PROFESSIONAL WEAR
BY BARCO

+ SPANDEX STRETCH

❖ NOT SOLD ON AMAZON

All Styles Main Fabric

74% Polyester

23% Rayon

3% Spandex twill



GREY'S ANATOMY™
 abc signature PROFESSIONAL WEAR
 BY BARCO

+ SPANDEX STRETCH

❖ NOT SOLD ON AMAZON

All Styles Main Fabric
 50% Polyester
 43% Recycled Polyester
 7% Spandex

GRST154-AULU
Autumn Luster

NEW

4-pocket, shaped
 V-neck with angled
 pockets and shoulder
 seams

Sizes: XS - 5XL
 CB: 26"

Coordinating colors:

Black	New Royal
Ciel	Steel
Coral Love	



GRST154-BUBL
Butterfly Blues

NEW

4-pocket, shaped
V-neck with angled
pockets and shoulder
seams

Sizes: XS - 5XL
CB: 26"

Coordinating colors:

Black	White
New Royal	Indigo
Ciel	



GRST154-WGAR
Wild Garden

NEW

4-pocket, shaped
V-neck with angled
pockets and shoulder
seams

Sizes: XS - 5XL
CB: 26"

Coordinating colors:

Black	Hunter
Wine	Coral Love
Slate Purple	

GRST136 Capri Top

2-pocket, hourglass V-neck, front and back princess seams, chest and sleeve welt pockets, rib knit center back panel, high-low hem tuck-in top
 Sizes: XXS - 3XL, CB: 25.5"
 Color shown: 23 Indigo

Knit Accent Content:
 94% Polyester / 6% Spandex

**ANTIMICROBIAL****01 Black****08 New Royal****10 White****23 Indigo****40 Ciel****65 Wine****312 Olive**

•NEW

328 Bahama**512 Brilliance****905 Steel****GRST124 Carly Top**

3-pocket, sport neck, rib knit front and back panels, exposed zipper pocket, shirt tail hem
 Sizes: XXS - 3XL, CB: 25.5"
 Color shown: 40 Ciel

Knit Accent Content:
 94% Polyester / 6% Spandex

**ANTIMICROBIAL****01 Black****08 New Royal****10 White****23 Indigo****37 Hunter****39 Teal****40 Ciel****65 Wine****312 Olive****328 Bahama****512 Brilliance****600 Scarlet****905 Steel****1581 Coral Love**

•NEW

GRST045 Serena Top

3-pocket, ribbed V-neck, PDA pocket, logo tape side slit detail, rib knit back insets with princess seam, straight hem
 Sizes: XXS - 3XL, CB: 25.5"
 Color shown: 08 New Royal

Knit Accent Content:
 94% Polyester / 6% Spandex

**ANTIMICROBIAL****01 Black****08 New Royal****10 White****23 Indigo****37 Hunter****39 Teal****40 Ciel****65 Wine****312 Olive****328 Bahama****471 Moonstruck****512 Brilliance****600 Scarlet****905 Steel****1581 Coral Love**

•NEW

All Styles Main Fabric

74% Polyester / 23% Rayon / 3% Spandex twill

G denotes colors supported for Groups



GRST001 Kim Top
3-pocket, V-neck surplice
with front and back princess
seams, zip front pocket
Sizes: *XXS - 5XL, CB: 26"*
Color shown: 600 Scarlet



01 Black
08 New Royal
10 White
23 Indigo
39 Teal
40 Ciel
65 Wine
312 Olive
328 Bahama
471 Moonstruck
600 Scarlet
905 Steel

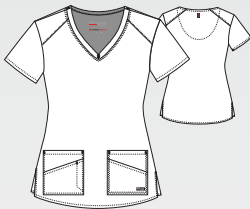
GVST028 Bree Tuck-In Top
1-pocket, knit V-neck with light
grey badge loop and shaped
high-low hem
Sizes: *XS - 3XL, CB: 25.5"*
Color shown: 65 Wine

Knit Accent Content:
88% Polyester / 12% Spandex



01 Black	G
08 New Royal	G
23 Indigo	G
39 Teal	G
40 Ciel	G
65 Wine	G
312 Olive	G
328 Bahama	G
471 Moonstruck	
503 Galaxy	•NEW G
905 Steel	G
1581 Coral Love	•NEW

GRST011 Emma Top
4-pocket, V-neck with
angled seams
Sizes: *XXS - 5XL, CB: 26"*
Color shown: 39 Teal



01 Black	G
08 New Royal	G
10 White	G
23 Indigo	G
37 Hunter	G
39 Teal	G
40 Ciel	G
65 Wine	G
312 Olive	G
328 Bahama	G
471 Moonstruck	
503 Galaxy	•NEW G
600 Scarlet	
905 Steel	G
1277 Eggplant	
1581 Coral Love	•NEW

G denotes colors supported for Groups

All Styles Main Fabric
74% Polyester / 23% Rayon / 3% Spandex twill



GRSP526 Serena Pant

7-pocket, duchess knit waistband with drawcord, mid-rise, patch pockets, double cargo, slit hem, logo tape detail tapered leg

Sizes: XXS - 3XL, I: 30"

XSP - XLP, I: 28"

XST - XLT, I: 32"

Color shown: 905 Steel

Knit Accents Content:

88% Polyester / 12% Spandex



ANTIMICROBIAL

01 Black
08 New Royal
10 White
23 Indigo
37 Hunter
39 Teal
40 Ciel
65 Wine
312 Olive
328 Bahama
471 Moonstruck
512 Brilliance
600 Scarlet
905 Steel
1581 Coral Love •NEW

GRSP527 Carly Jogger

7-pocket, rib trim waistband, mid-rise, front slant pockets, double cargo pocket, zipper PDA, rib knit cuff jogger

Sizes: XXS - 3XL, I: 29"

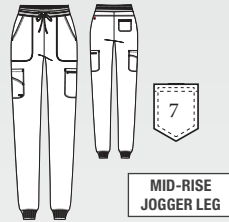
XSP - XLP, I: 27"

XST - XLT, I: 31"

Color shown: 40 Ciel

Knit Accents Content:

94% Polyester / 6% Spandex



ANTIMICROBIAL

01 Black
08 New Royal
10 White
23 Indigo
37 Hunter
39 Teal
40 Ciel
65 Wine
312 Olive
328 Bahama
471 Moonstruck
512 Brilliance
600 Scarlet
905 Steel
1581 Coral Love •NEW

GRSP537 Eden Jogger

5-pocket, knit rib drawcord waistband, zipper front pockets, double single cargo, ribbed cuff jogger

Sizes: XXS - 3XL, I: 29"

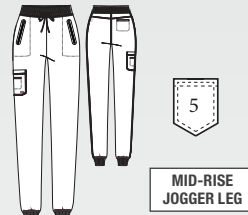
XXSP - 2XLP, I: 27"

XST - XLT, I: 31"

Color shown: 312 Olive

Knit Accents Content:

94% Polyester / 6% Spandex



01 Black	G
08 New Royal	G
10 White	G
23 Indigo	G
37 Hunter	•NEW G
39 Teal	G
40 Ciel	G
65 Wine	G
312 Olive	G
328 Bahama	G
471 Moonstruck	
503 Galaxy	•NEW G
905 Steel	G
1581 Coral Love	•NEW

GRSP500 Kim Pant

3-pocket, logo plush elastic back waistband, zip cargo pocket

Sizes: XXS - 5XL, I: 31"

XXSP - 2XLP, I: 29"

XXST - XLT, I: 33.5"

Color shown: 600 Scarlet

Knit Accents Content:

88% Polyester / 12% Spandex



01 Black	G
08 New Royal	G
10 White	G
23 Indigo	G
37 Hunter	G
39 Teal	G
40 Ciel	G
65 Wine	G
312 Olive	G
328 Bahama	G
471 Moonstruck	
503 Galaxy	•NEW G
600 Scarlet	
905 Steel	G
1277 Eggplant	
1581 Coral Love	•NEW

G denotes colors supported for Groups

All Styles Main Fabric
74% Polyester/23% Rayon/3% Spandex twill



GRSW017 Millie Jacket
3-pocket, rib neck, zip front
placket, PDA and zip pocket,
princess seamed front, back
seams and ribbed cuff
Sizes: XS - 3XL, CB: 25.5"
Color shown: 65 Wine

Knit Accent Content:
94% Polyester / 6% Spandex



01 Black	G
08 New Royal	G
10 White	G
23 Indigo	G
39 Teal	G
40 Ciel	G
65 Wine	G
312 Olive	G
328 Bahama	G
503 Galaxy	•NEW G
905 Steel	G

GRSW873 Gianna Warm-Up
5-pocket, round neck, zip front,
PDA and zipper pocket, rib back
panel, rib cuff warm-up
Sizes: XXS - 3XL, CB: 25.5"
Color shown: 23 Indigo

Knit Accent Content:
94% Polyester / 6% Spandex



ANTIMICROBIAL

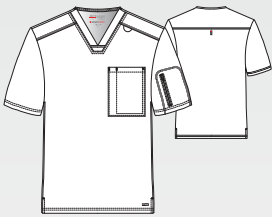
01 Black
08 New Royal
10 White
23 Indigo
37 Hunter
39 Teal
40 Ciel
65 Wine
312 Olive
328 Bahama
471 Moonstruck
600 Scarlet
905 Steel

G denotes colors supported for Groups

All Styles Main Fabric
74% Polyester / 23% Rayon / 3% Spandex twill



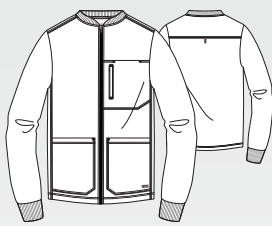
GRST079 Murphy Top
2-pocket, V-neck shaped chest pocket, zipper sleeve pocket top
Sizes: XS - 5XL, CB: 29"
Color shown: 23 Indigo



ANTIMICROBIAL

01 Black	G
08 New Royal	G
10 White	G
23 Indigo	G
37 Hunter	G
39 Teal	G
40 Ciel	G
65 Wine	G
312 Olive	G
328 Bahama	G
471 Moonstruck	
503 Galaxy	•NEW G
905 Steel	G

GRSW871 React Warm-Up
5-pocket knit stand collar with zipper front, chest patch, zipper welt pocket, chin guard, and knit cuff warm-up
Sizes: XS - 5XL, CB: 29"
Color shown: 905 Steel
Knit Accents Content: 94% Polyester / 6% Spandex



ANTIMICROBIAL

01 Black	G
08 New Royal	G
10 White	G
23 Indigo	G
37 Hunter	G
39 Teal	G
40 Ciel	G
65 Wine	G
312 Olive	G
328 Bahama	G
503 Galaxy	•NEW G
905 Steel	G

All Styles Main Fabric
74% Polyester / 23% Rayon / 3% Spandex twill

G denotes colors supported for Groups



GRSP617 Hudson Pant NEW

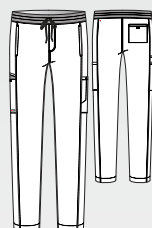
6-pocket, rib knit with plush elastic embedded waistband, two-tone drawcord, front zipper fly, on-seam front pockets, side leg panel with top entry cargo pockets, welt back pocket, slim straight pant

Sizes: XS - 5XL, I: 32"

XSS - 2XLS, I: 30"

XST - 2XLT, I: 34"

Color shown: 01 Black



STRAIGHT LEG

ANTIMICROBIAL

01 Black	G
08 New Royal	G
23 Indigo	G
40 Ciel	G
328 Bahama	G
471 Moonstruck	
503 Galaxy	G
905 Steel	G

GRSP550 Murphy Jogger

5-pocket, rib knit with plush elastic embedded waistband, two-tone drawcord, front zipper fly, zipper front pockets, angled single double cargo pocket, single back pocket, rib knit cuff jogger

Sizes: XS - 5XL, I: 29"

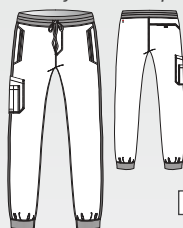
XSS - 2XLS, I: 27"

XST - XLT, I: 31"

Color shown: 40 Ciel

Knit Accents Content:

94% Polyester / 6% Spandex



JOGGER LEG

ANTIMICROBIAL

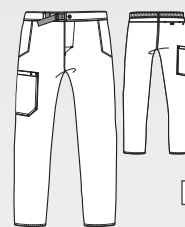
01 Black	G
08 New Royal	G
10 White	G
23 Indigo	G
37 Hunter	G
39 Teal	G
40 Ciel	G
65 Wine	G
312 Olive	G
328 Bahama	G
471 Moonstruck	
503 Galaxy	•NEW G
905 Steel	G

GRSP507 Wesley Pant

4-pocket, belt closure waist with zip fly cargo

Sizes: XS - 5XL, I: 32"

Color shown: 328 Bahama



STRAIGHT LEG

01 Black	
08 New Royal	
10 White	
23 Indigo	
37 Hunter	
40 Ciel	
65 Wine	
328 Bahama	
905 Steel	

G denotes colors supported for Groups

All Styles Main Fabric
74% Polyester/23% Rayon/3% Spandex twill





GREY'S ANATOMY™

abc signature
© ABC Signature

PROFESSIONAL WEAR
BY BARCO

IMPACT

All Styles Main Fabric

74% Polyester
23% Rayon
3% Spandex twill

7188 Elevate Top

3-pocket, crossover
V-neck with Barco Tape
detailing at front and
back seaming, including
2 patch pockets with
utility pocket

Sizes: XXS-3XL
CB: 25.5"
Color shown:
2263 Slate Purple

7228 Elevate Pant

6-pocket, mid-rise
straight leg cargo with
hidden welt pocket,
knit comfort elastic
waistband, grommet
eyes with titanium
colored tipped ties, back
vents at hem and Barco
Tape* detailing

Sizes: XXS-3XL, I: 31.5"
XXSP - XLP, I: 29.5"
XXST - XLT, I: 33.5"
Color shown:
2263 Slate Purple

NEW COLOR

Slate Purple

See page 23
for additional information

7187 Harmony Top

3-pocket, V-neck with Barco Tape® detailing, aerodynamic shaped hem, titanium colored utility ring and t-back seaming
 Sizes: XXS - 3XL, CB: 26"
 Color shown: 23 Indigo

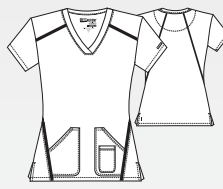
Inside Sleeve Space dye knit:
 49% Polyester/45% Nylon
 6% Spandex



01 Black
08 New Royal
23 Indigo
40 Ciel
65 Wine
328 Bahama
905 Steel
2263 Slate Purple •NEW

7188 Elevate Top

3-pocket, crossover V-neck with Barco Tape® detailing at front and back seaming, including 2 patch pockets with utility pocket
 Sizes: XXS - 3XL, CB: 25.5"
 Color shown: 905 Steel



01 Black
08 New Royal
23 Indigo
40 Ciel
65 Wine
312 Olive
328 Bahama
905 Steel
2263 Slate Purple •NEW

7228 Elevate Pant

6-pocket, mid-rise straight leg cargo with hidden welt pocket, knit comfort elastic waistband, grommet eyes with titanium colored tipped ties, back vents at hem and Barco Tape® detailing
 Sizes: XXS - 3XL, I: 31.5"
 XXSP - XLP, I: 29.5"
 XXST - XLT, I: 33.5"
 Color shown: 65 Wine

Knit Accent Content:
 88% Polyester / 12% Spandex



01 Black
08 New Royal
23 Indigo
40 Ciel
65 Wine
312 Olive
328 Bahama
905 Steel
2263 Slate Purple •NEW

All Styles Main Fabric

74% Polyester/23% Rayon/3% Spandex



New Fall Color

2348 Fern

GREY'S ANATOMY™

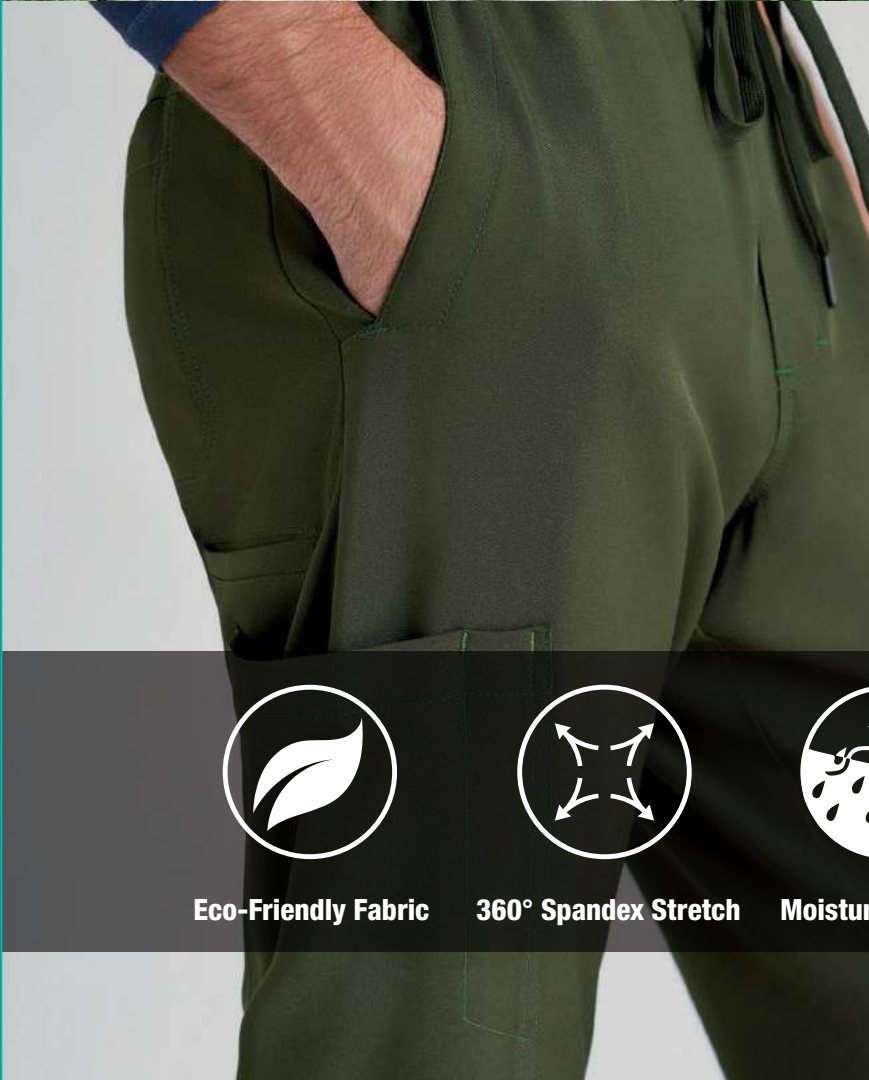
abc signature
©ABC Signature

PROFESSIONAL WEAR
BY BARCO

EVOLVE
SUSTAINABLE **STRETCH**

PRIMARY FABRIC CONTENT

48% CiCLO® Polyester | 44% Recycled Polyester | 8% Spandex



Eco-Friendly Fabric



360° Spandex Stretch



Moisture-Wicking



Wrinkle Release

BARCO®
Made to Matter



GREY'S ANATOMY™
abc signature
© ABC Signature
PROFESSIONAL WEAR
BY BARCO
EVOLVE
SUSTAINABLE STRETCH

❖ NOT SOLD ON AMAZON

All Styles Main Fabric
48% CiCLO Polyester
44% Recycled Polyester
8% Spandex

GSSW886
Virtue Warm-Up
3-pocket, banded collar,
badge loop, zip-front,
side-entry waist pockets
warm-up

Sizes: XXS - 5XL
CB: 26"
Color shown:
2348 Fern

**Not available in*
Desert Rouge

GSSP625
Terra Jogger
6-pocket, encased elastic
waistband with drawcord,
mid-rise, front pockets
with piped edge finish,
double cargo pocket,
elastic cuff jogger

Sizes: XXS - 5XL, I: 29"
XSP - 2XLP, I: 27"
XST - XLT, I: 31"
Color shown:
2348 Fern

GSST180
Rhythm Top
2-pocket, V-neck with
piped edge finish, inset
waist pockets, pen
pocket

Sizes: XXS - 5XL
CB: 25.5"
Color shown:
2348 Fern

AVAILABLE IN

Black

New Royal

Indigo

Steel

Desert Rouge

Fern

See pages 32-33
for additional information



AVAILABLE IN

Black

New Royal

Indigo

Steel

Desert Rouge

Fern

**GSST181
Sway Top**

1-pocket, banded
V-neck, badge loop,
chest patch pocket,
high-low step hem,
tuck-in

Sizes: XXS - 5XL

CB: 25.5"

Color shown:
2148 Desert Rouge

**GSSP627
Cosmo Pant**

6-pocket, encased
elastic waistband with
inner drawcord, mid-
rise, side panels with
angled welt and patch
cargo pocket, tapered
leg pant

Sizes: XXS - 5XL, I: 30"

XSP - 2XLP, I: 28"

XST - XLT, I: 32"

Color shown:

2148 Desert Rouge

GREY'S ANATOMY™
abc signature
© ABC Signature PROFESSIONAL WEAR
BY BARCO
EVOLVE
 SUSTAINABLESTRETCH

❖ **NOT SOLD ON AMAZON**

All Styles Main Fabric

48% CiCLO Polyester

44% Recycled Polyester

8% Spandex

See pages 32-33
for additional information



GREY'S ANATOMY™

abc signature
© ABC Signature

PROFESSIONAL WEAR
BY BARCO

EVOLVE
SUSTAINABLE STRETCH

❖ NOT SOLD ON AMAZON

All Styles Main Fabric

48% CiCLO Polyester
44% Recycled Polyester
8% Spandex

GSSP625 Terra Jogger

6-pocket, encased elastic waistband with drawcord, mid-rise, front pockets with piped edge finish, double cargo pocket, elastic cuff jogger

Sizes: XXS - 5XL, I: 29"
XSP - 2XLP, I: 27"
XST - XLT, I: 31"
Color shown:
23 Indigo

GSST180 Rhythm Top

2-pocket, V-neck with piped edge finish, inset waist pockets, pen pocket

Sizes: XXS - 5XL
CB: 25.5"
Color shown:
23 Indigo

AVAILABLE IN

Black

New Royal

Indigo

Steel

Desert Rouge

Fern

See pages 32-33
for additional information



AVAILABLE IN

Black
New Royal
Indigo
Steel
Desert Rouge
Fern

**GSST181
Sway Top**

1-pocket, banded
V-neck, badge loop,
chest patch pocket,
high-low step hem,
tuck-in

Sizes: XXS - 5XL
CB: 25.5"

Color shown:
905 Steel

**GSSP627
Cosmo Pant**

6-pocket, encased
elastic waistband with
inner drawcord, mid-
rise, side panels with
angled welt and patch
cargo pocket, tapered
leg pant

Sizes: XXS - 5XL, I: 30"
XSP - 2XLP, I: 28"
XST - XLT, I: 32"
Color shown:
905 Steel

GREY'S ANATOMY™
abc signature
© ABC Signature PROFESSIONAL WEAR
BY BARCO
EVOLVE
 SUSTAINABLESTRETCH

❖ **NOT SOLD ON AMAZON**

All Styles Main Fabric
 48% CiCLO Polyester
 44% Recycled Polyester
 8% Spandex

See pages 32-33
for additional information



GREY'S ANATOMY™

abc signature
© ABC Signature

PROFESSIONAL WEAR
BY BARCO

EVOLVE
SUSTAINABLE STRETCH

❖ **NOT SOLD ON AMAZON**

All Styles Main Fabric

48% CiCLO Polyester
44% Recycled Polyester
8% Spandex

GSSP626

Voyager Jogger

5-pocket, encased elastic waistband with drawcord, front pockets with piped edge finish, patch cargo pocket, half back yoke with inset pocket, elastic cuff jogger

Sizes: XS - 5XL, I: 29"
XSS - 2XLS, I: 27"
XST - XLT, I: 31"

Color shown:
2348 Fern

GSST179

Journey Top

1-pocket, V-neck with piped edge finish, badge loop, inset chest pocket, high-low hem with notched side seam top

Sizes: XS - 5XL
CB: 29"

Color shown:
2348 Fern

AVAILABLE IN

Black

New Royal

Indigo

Steel

Fern

See pages 32-33
for additional information



AVAILABLE IN

Black

New Royal

Indigo

Steel

Fern

See pages 32-33
for additional information

GSSW887 Cycle Warm-Up

3-pocket, banded collar, zip-front, chest patch pocket with pen slot, side-entry waist pockets warm-up

Sizes: XS - 5XL

CB: 29"

Color shown:
23 Indigo

*Available in Black
and Indigo Only

GSSP626 Voyager Jogger

5-pocket, encased elastic waistband with drawcord, front pockets with piped edge finish, patch cargo pocket, half back yoke with inset pocket, elastic cuff jogger

Sizes: XS - 5XL, I: 29"

XSS - 2XLS, I: 27"

XST - XLT, I: 31"

Color shown:
23 Indigo

GSST179 Journey Top

1-pocket, V-neck with piped edge finish, badge loop, inset chest pocket, high-low hem with notched side seam top

Sizes: XS - 5XL

CB: 29"

Color shown:
23 Indigo

GREY'S ANATOMY™
abc signature
© ABC Signature PROFESSIONAL WEAR
BY BARCO
EVOLVE
 SUSTAINABLESTRETCH

❖ NOT SOLD ON AMAZON

All Styles Main Fabric
 48% CiCLO Polyester
 44% Recycled Polyester
 8% Spandex

GSST180 Rhythm Top

2-pocket, V-neck with piped edge finish, inset waist pockets, pen pocket

Sizes: XXS - 5XL, CB: 25.5"

Color shown: 01 Black

**GSST181 Sway Top**

1-pocket, banded V-neck, badge loop, chest patch pocket, high-low step hem, tuck-in

Sizes: XXS - 5XL, CB: 25.5"

Color shown: 08 New Royal

**GSSP625 Terra Jogger**

6-pocket, encased elastic waistband with drawcord, mid-rise, front pockets with piped edge finish, double cargo pocket, elastic cuff jogger

Sizes: XXS - 5XL, I: 29"

XSP - 2XLP, I: 27"

XST - XLT, I: 31"

Color shown: 23 Indigo

**GSSP627 Cosmo Pant**

6-pocket, encased elastic waistband with inner drawcord, mid-rise, side panels with angled welt and patch cargo pocket, tapered leg pant

Sizes: XXS - 5XL, I: 30"

XSP - 2XLP, I: 28"

XST - XLT, I: 32"

Color shown:

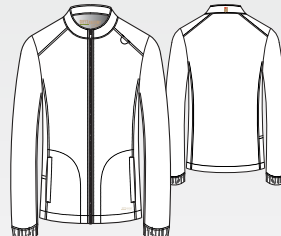
2148 Desert Rouge

**GSSW886 Virtue Warm-Up**

3-pocket, banded collar, badge loop, zip-front, side-entry waist pockets warm-up

Sizes: XXS - 5XL, CB: 26"

Color shown: 905 Steel



01 Black

08 New Royal

23 Indigo

905 Steel

2148 Desert Rouge

2348 Fern

01 Black

08 New Royal

23 Indigo

905 Steel

2148 Desert Rouge

2348 Fern

01 Black

08 New Royal

23 Indigo

905 Steel

2148 Desert Rouge

2348 Fern

01 Black

08 New Royal

23 Indigo

905 Steel

2148 Desert Rouge

2348 Fern

01 Black

08 New Royal

23 Indigo

905 Steel

2348 Fern

All Styles Main Fabric

48% CÍCLO Polyester / 44% Recycled Polyester / 8% Spandex

CÍCLO
FUNCTIONAL. SENSIBLE. SUSTAINABLE.



GSST179 Journey Top

1-pocket, V-neck with piped edge finish, badge loop, inset chest pocket, high-low hem with notched side seam top

Sizes: XS - 5XL, CB: 29"

Color shown: 2348 Fern



01 Black

08 New Royal

23 Indigo

905 Steel

2348 Fern

GSSP626 Voyager Jogger

5-pocket, encased elastic waistband with drawcord, front pockets with piped edge finish, patch cargo pocket, half back yoke with inset pocket, elastic cuff jogger

Sizes: XS - 5XL, I: 29"

XSS - 2XLS, I: 27"

XST - XLT, I: 31"

Color shown: 08 New Royal



JOGGER LEG

01 Black

08 New Royal

23 Indigo

905 Steel

2348 Fern

GSSW887 Cycle Warm-Up

3-pocket, banded collar, zip-front, chest patch pocket with pen slot, side-entry waist pockets warm-up

Sizes: XS - 5XL, CB: 29"

Color shown: 23 Indigo



01 Black

23 Indigo

All Styles Main Fabric

48% CÍCLO Polyester / 44% Recycled Polyester / 8% Spandex

CÍCLO
FUNCTIONAL. SENSIBLE. SUSTAINABLE.



GREY'S ANATOMY™

abc signature

© ABC Signature

PROFESSIONAL WEAR
BY BARCO



GREY'S ANATOMY™

abc signature

©ABC Signature

PROFESSIONAL WEAR

BY BARCO

AUTHENTIC STYLE



Moisture-Wicking



Easy Care



Super-Soft Touch



All-Day Freshness

PRIMARY FABRIC CONTENT

77% Polyester | 23% Rayon

BARCO®
Made to Matter



GREY'S ANATOMY™
PROFESSIONAL WEAR
BY BARCO

All Styles Main Fabric
77% Polyester
23% Rayon

GRT049
Kira Top
4-pocket, knit V-neck,
"love" zipper pocket,
"love" inside neck
tape, knit sleeve hem,
front and back
princess seams top

Sizes: XS - 3XL
CB: 25.5"
Color shown:
65 Wine

GRP534
Kira Jogger
5-pocket, tunnel
drawcord waistband,
mid-rise, double
cargo with zipper
pocket, tailored side
seam knit cuff jogger

Sizes: XS - 3XL, I: 28"
XSP - XLP, I: 26"
XST - XLT, I: 30"
Color shown:
65 Wine



GRT091
Evan Top

2-pocket, lapover
V-neck, contrast badge
loop at left shoulder,
chest pocket with pen
slot, single sleeve
pocket with side vents

Sizes: XS - 5XL
CB: 29"

Color shown:
328 Bahama

GRP558
Evan Pant

5-pocket, full elastic
waistband with contrast
drawcord, front zip fly,
both side entry hand
pockets, one right back
patch pocket, and one
single double left cargo
pocket

Sizes: XS - 5XL, I: 32"
XST - XLT, I: 34"
XSS-XLS, I: 30"
Color shown:
328 Bahama

GREY'S ANATOMY™
abc signature
©ABC Signature
PROFESSIONAL WEAR
BY BARCO

All Styles Main Fabric
77% Polyester
23% Rayon

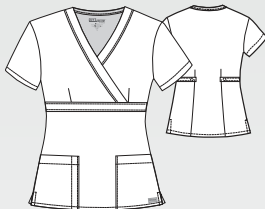
GRT049 Kira Top

4-pocket, knit V-neck, love zipper pocket, love inside neck tape, knit sleeve hem, front and back princess seams top
 Sizes: XS - 3XL, CB: 25.5"
 Color shown: 65 Wine

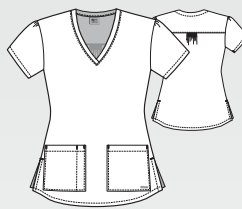
Zipper:
 100% Nylon

**4153 Riley Top**

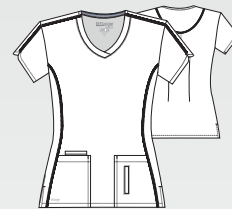
3-pocket, mock wrap with tab back
 Sizes: XXS - 5XL, CB: 25"
 Color shown: 23 Indigo

**71166 Aubrey Top**

2-pocket, V-neck with pen slot and Shirred back yoke
 Sizes: XS - 5XL, CB: 26"
 Color shown: 37 Hunter

**41423 Cora Top**

4-pocket, crossover V-neck with side panels, zipper pocket and tulip sleeve detail, fitted back
 Sizes: XXS - 5XL, CB: 25.5"
 Color shown: 39 Teal



01 Black
08 New Royal
10 White
23 Indigo
37 Hunter
39 Teal
40 Ciel
65 Wine
328 Bahama
905 Steel

01 Black
08 New Royal
23 Indigo
37 Hunter
40 Ciel
905 Steel

01 Black
08 New Royal
23 Indigo
37 Hunter
40 Ciel
65 Wine
600 Scarlet
905 Steel

01 Black
08 New Royal
10 White
23 Indigo
37 Hunter
39 Teal
40 Ciel
65 Wine
328 Bahama
503 Galaxy
600 Scarlet
905 Steel

All Styles Main Fabric
 77% Polyester/23% Rayon

G denotes colors supported for Groups



4277 Mia Pant

6-pocket, flat front, knit elastic back waistband with drawcord, double cargo, back pockets mid-rise

Sizes: XXS - 5XL, I: 31.5"

XXSP - 2XLP, I: 29.5"

XXST - XLT, I: 33.5"

Color shown: 40 Ciel

Knit Accents Content:

88% Polyester/12% Spandex

**GRP534 Kira Jogger**

5-pocket, tunnel drawcord waistband, mid-rise, double cargo with zipper pocket, tailored side seam knit cuff jogger

Sizes: XS - 3XL, I: 28"

XSP - XLP, I: 26"

XST - XLT, I: 30"

Color shown: 328 Bahama

Knit Accents Content:

94% Polyester / 6% Spandex

**4275 Aubrey Pant**

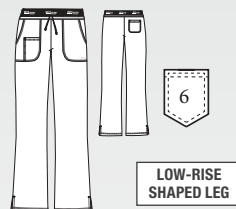
3-pocket, logo plush elastic waistband pant with drawcord

Sizes: XXS - 5XL, I: 31"

XXSP - XLP, I: 29"

XXST - XLT, I: 33"

Color shown: 65 Wine

**4232 Riley Pant**

5-pocket, tie front elastic back, mid-rise flare leg

Sizes: XXS - 5XL, I: 31.5"

XXSP - 2XLP, I: 29.5"

XXST - XLT, I: 33.5"

Color shown: 08 New Royal



01 Black	G
08 New Royal	G
10 White	G
23 Indigo	G
37 Hunter	G
39 Teal	G
40 Ciel	G
65 Wine	G
328 Bahama	G
503 Galaxy	G
600 Scarlet	
905 Steel	G

01 Black	
08 New Royal	
10 White	
23 Indigo	
37 Hunter	
39 Teal	
40 Ciel	
65 Wine	
328 Bahama	
905 Steel	

01 Black	
08 New Royal	
23 Indigo	
37 Hunter	
40 Ciel	
65 Wine	
328 Bahama	
905 Steel	

01 Black	
08 New Royal	
23 Indigo	
37 Hunter	
40 Ciel	
905 Steel	

G denotes colors supported for Groups

All Styles Main Fabric
77% Polyester/23% Rayon



GRP560 Lilah Maternity Pant

1-pocket, knit maternity waistband with single cargo pocket pant
Sizes: XS - 2XL, I: 31"
Color shown: 905 Steel

Knit Accents Content:
88% Polyester/12% Spandex



01 Black
08 New Royal
23 Indigo
905 Steel

GRT094 Lilah Maternity Top

2-pocket, mock wrap empire line top with tie and fitted back
Sizes: XS - 2XL, CB:27"
Color shown: 23 Indigo



01 Black
08 New Royal
23 Indigo
905 Steel

4450 Jamie Warm-Up

4-pocket, round neck warm-up with logo snaps and dyed-to-match knit cuffs with fitted back
Sizes: XS - 5XL, CB:28"
Color shown: 10 White

Knit Accents Content:
100% Polyester



01 Black
08 New Royal
10 White
23 Indigo
37 Hunter
39 Teal
40 Ciel
65 Wine
328 Bahama
503 Galaxy
905 Steel

All Styles Main Fabric
77% Polyester/23% Rayon

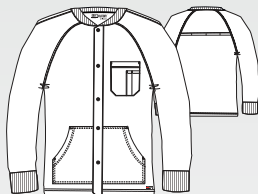


0406 Cole Warm-Up

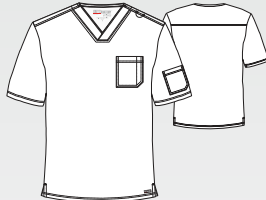
5-pocket, raglan warm-up with rib cuff and collar, kanga pockets, open back yoke vent and snap front
 Sizes: XS - 5XL, CB: 29"
 Color shown: 23 Indigo

Knit Accents Content:

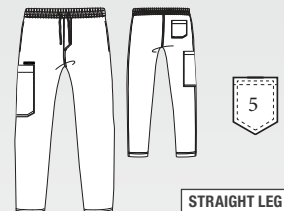
60% Polyester/40% Cotton

**GRT091 Evan Top**

2-pocket, lapover V-neck, contrast badge loop at left shoulder, chest pocket with pen slot, single sleeve pocket with side vents
 Sizes: XS - 5XL, CB: 29"
 Color shown: 328 Bahama

**GRP558 Evan Pant**

5-pocket, full elastic waistband with contrast drawcord, front zip fly, both side entry hand pockets, one right back patch pocket, and one single double left cargo pocket
 Sizes: XS - 5XL, I: 32"
 XST - XLT, I: 34"
 XSS-XLS, I: 30"
 Color shown: 08 New Royal



01 Black
23 Indigo
905 Steel

01 Black	G
08 New Royal	G
10 White	G
23 Indigo	G
37 Hunter	G
39 Teal	G
40 Ciel	G
65 Wine	G
328 Bahama	G
503 Galaxy	G
905 Steel	G

01 Black	G
08 New Royal	G
10 White	G
23 Indigo	G
37 Hunter	G
39 Teal	G
40 Ciel	G
65 Wine	G
328 Bahama	G
503 Galaxy	G
905 Steel	G

G denotes colors supported for Groups

All Styles Main Fabric
 77% Polyester/23% Rayon



NEW Fall Color

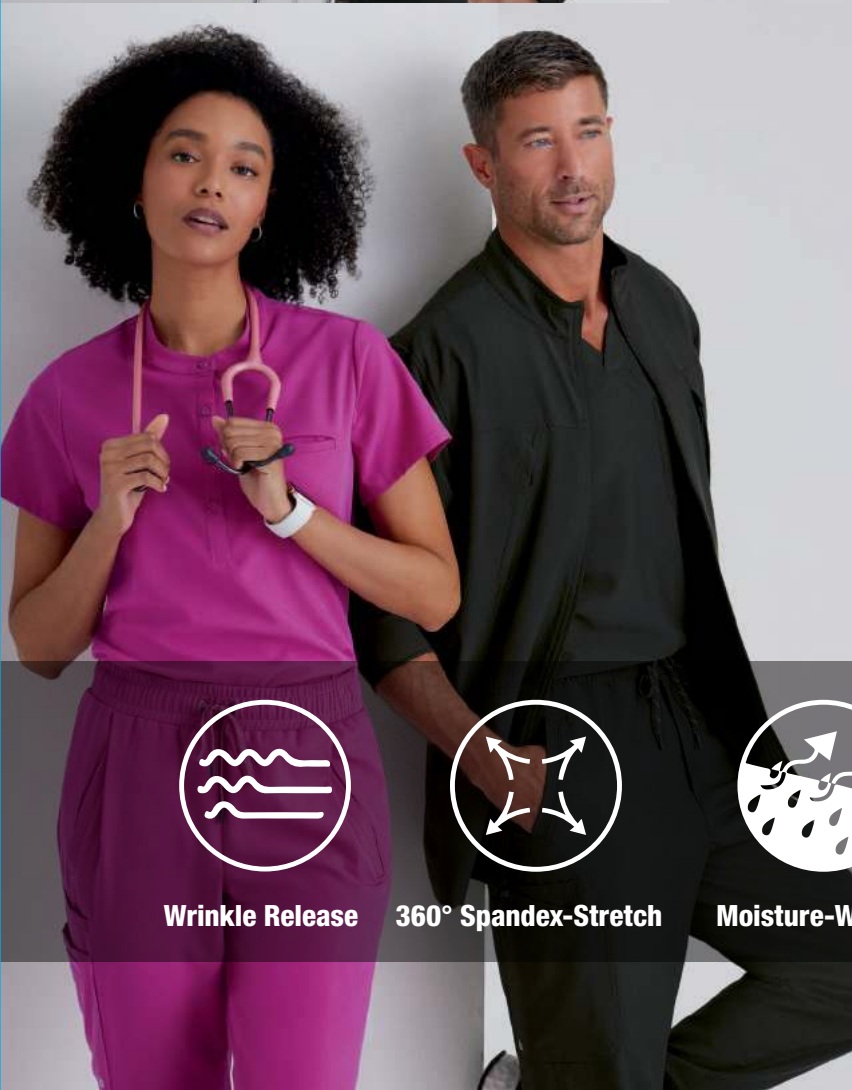
1579 Magenta Rush



BARCO
UNIFY

PRIMARY FABRIC CONTENT

71% Polyester | 24% Rayon | 5% Spandex



Wrinkle Release



360° Spandex-Stretch



Moisture-Wicking



Super-Soft Touch

BARCO®
Made to Matter



BARCO
UNIFY

❖ NOT SOLD ON AMAZON

All Styles Main Fabric

71% Polyester

24% Rayon

5% Spandex twill

BUT163

Mission Top

1-pocket, Henley style neckline, dyed-to-match button placket, welt chest pocket, straight hem, tuck in style top

Sizes: XXS-5XL

CB: 26.5"

Color shown:

1579 Magenta Rush

BUP606

Mission Jogger

6-pocket, high rise jogger, elastic waistband with drawcord, front welt pockets, PDA welt, double single cargo pockets, elastic hem jogger

Sizes: XS-5XL, I: 29"

XSP-XLP, I: 27"

ST-XLT, I: 31"

Color shown:

1579 Magenta Rush

NEW COLORS

Olive

Magenta Rush

*See pages 48-49
for additional information*



NEW COLORS

Olive

Magenta Rush

See pages 48-49
for additional information

BUT167**Purpose Top**

4-pocket, V-neckline, shoulder contrast badge loop, zip pocket PDA, tool strip detail at front pockets

Sizes: XXS-5XL

CB: 25.5"

Color shown:
312 Olive

BUP601**Purpose Pant**

5-pocket, high-rise slim pant, flat front waistband with interior drawcord, dyed-to-match zip front pockets, double cargo PDA pocket, back pocket pant

Sizes: XXS-5XL, I: 30.5"

XXSP-XLP, I: 28.5"

ST-XLT, I: 32.5"

Color shown:
312 Olive

BUW884**Team Warm-Up**

3-pocket low funnel neckline, princess seams, dyed-to-match zip placket, shoulder contrast badge loop, front pockets, welt sleeve PDA, back waist detail, rib cuff sleeves jacket

Sizes: XS-5XL

CB: 26"

Color shown:
312 Olive

BARCO
UNIFY

❖ NOT SOLD ON AMAZON

All Styles Main Fabric

71% Polyester

24% Rayon

5% Spandex twill



BARCO
UNIFY

❖ NOT SOLD ON AMAZON

All Styles Main Fabric

71% Polyester
24% Rayon
5% Spandex twill

BUT153
Rally Top

3-pocket, banded V-neck, shoulder contrast badge loop, dyed-to-match zip chest pocket and patch pocket with pen slots, sleeve pocket, straight hem top

Sizes: XS-5XL
CB: 29"
Color shown:
01 Black

BUP602
Rally Jogger

6-pocket elastic waistband with drawcord, front zip fly, L shaped welt pocket, double single cargo pocket with dyed-to-match zip pocket, back pocket, rib cuff jogger

Sizes: XS-5XL, I: 29"
SS-XLS, I: 27"
ST-XLT, I: 31"
Color shown:
01 Black

BUW881
Rally Warm-Up

4-pocket, rib trimmed mock neck, dyed-to-match zip placket, hidden zip chest pockets, kanga-style front pockets, cuff sleeve jacket

Sizes: XS-5XL
CB: 29"
Color shown:
01 Black

*Not available in Olive

NEW COLORS

Olive

See pages 48-49
for additional information



AVAILABLE IN

Black

New Royal

Indigo

Steel

See pages 48-49
for additional information

BUP628**Cruise Pant NEW**

7-pocket, button waistband with inside drawcord and encased elastic at back, zip fly, on-seam front pockets, side panels with angled welt cargo pockets, top entry patch cargo pocket with additional vertical zip pocket, back patch pocket with velcro closure, slim straight pant

Sizes: XS-5XL, I: 32"

SS-XLS, I: 30"

ST-XLT, I: 34"

Color shown:

08 New Royal

BARCO
UNIFY

❖ NOT SOLD ON AMAZON

All Styles Main Fabric

71% Polyester

24% Rayon

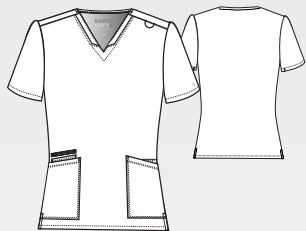
5% Spandex twill

BUT167 Purpose Top

4-pocket, V-neckline, shoulder contrast badge loop, zip pocket PDA, tool strip detail at front pockets

Sizes: XXS-5XL, CB: 25.5"

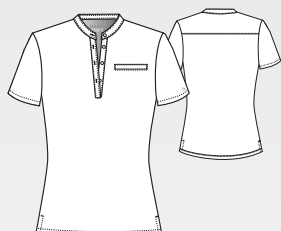
Color shown: 23 Indigo

**BUT163 Mission Top**

1-pocket, Henley style neckline, dyed-to-match button placket, welt chest pocket, straight hem, tuck in style top

Sizes: XXS-5XL, CB: 26.5"

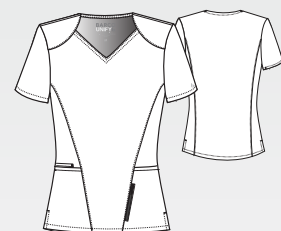
Color shown: 905 Steel

**BUT156 Gratitude Top**

4-pocket Sweetheart neckline, princess seams, dyed-to-match front zip pocket, PDA, curved back hem top

Sizes: XXS-5XL, CB: 26"

Color shown: 65 Wine

**BUP601 Purpose Pant**

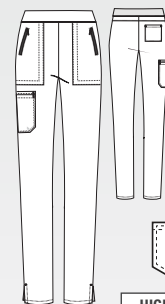
5-pocket, high-rise slim pant, flat front waistband with interior drawcord, dyed-to-match zip front pockets, double cargo PDA pocket, back pocket pant

Sizes: XXS-5XL, I: 30.5"

XXSP-XLP, I: 28.5"

ST-XLT, I: 32.5"

Color shown: 328 Bahama



5

HIGH-RISE
SLIM LEG

BUP606 Mission Jogger

6-pocket, high rise jogger, elastic waistband with drawcord, front welt pockets, PDA welt, double single cargo pockets, elastic hem jogger

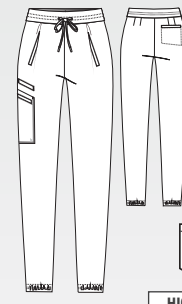
Sizes: XS-5XL, I: 29"

XSP-XLP, I: 27"

ST-XLT, I: 31"

Color shown:

1579 Magenta Rush



6

HIGH-RISE
JOGGER LEG

01 Black	G
08 New Royal	G
10 White	G
23 Indigo	G
40 Ciel	G
65 Wine	G
312 Olive	•NEW
328 Bahama	G
905 Steel	G
1579 Magenta Rush	•NEW

01 Black	G
08 New Royal	G
10 White	G
23 Indigo	G
40 Ciel	G
65 Wine	G
312 Olive	•NEW
328 Bahama	G
905 Steel	G
1579 Magenta Rush	•NEW

01 Black	G
08 New Royal	G
10 White	G
23 Indigo	G
40 Ciel	G
65 Wine	G
328 Bahama	G
905 Steel	G

01 Black	G
08 New Royal	G
10 White	G
23 Indigo	G
40 Ciel	G
65 Wine	G
312 Olive	•NEW
328 Bahama	G
905 Steel	G
1579 Magenta Rush	•NEW

01 Black	G
08 New Royal	G
10 White	G
23 Indigo	G
40 Ciel	G
65 Wine	G
312 Olive	•NEW
328 Bahama	G
905 Steel	G
1579 Magenta Rush	•NEW

All Styles Main Fabric

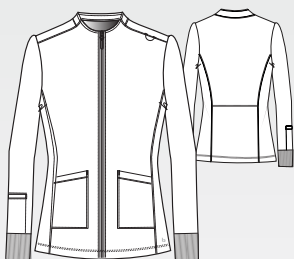
71% Polyester/24% Rayon/5% Spandex twill

G denotes colors supported for Groups



BUW884 Team Warm-Up

3-pocket low funnel neckline, princess seams, dyed-to-match zip placket, shoulder contrast badge loop, front pockets, welt sleeve PDA, back waist detail, rib cuff sleeves jacket
Sizes: XS-5XL, CB: 26"
Color shown: 40 Ciel



01 Black	G
08 New Royal	G
10 White	G
23 Indigo	G
40 Ciel	G
65 Wine	G
312 Olive	•NEW
328 Bahama	G
905 Steel	G

BUT153 Rally Top

3-pocket, banded V-neck, shoulder contrast badge loop, dyed-to-match zip chest pocket and patch pocket with pen slots, sleeve pocket, straight hem top
Sizes: XS-5XL, CB: 29"
Color shown: 01 Black



01 Black	G
08 New Royal	G
10 White	G
23 Indigo	G
40 Ciel	G
65 Wine	G
312 Olive	•NEW
328 Bahama	G
905 Steel	G

BUW881 Rally Warm-Up

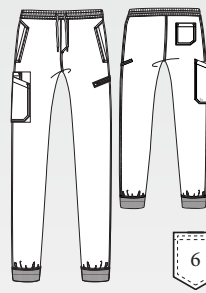
4-pocket, rib trimmed mock neck, dyed-to-match zip placket, hidden zip chest pockets, kanga-style front pockets, cuff sleeve jacket
Sizes: XS-5XL, CB: 29"
Color shown: 905 Steel



01 Black	G
08 New Royal	G
10 White	G
23 Indigo	G
40 Ciel	G
65 Wine	G
328 Bahama	G
905 Steel	G

BUP602 Rally Jogger

6-pocket elastic waistband with drawcord, front zip fly, L shaped welt pocket, double single cargo pocket with dyed-to-match zip pocket, back pocket, rib cuff jogger
Sizes: XS-5XL, I: 29"
SS-XLS, I: 27"
ST-XLT, I: 31"
Color shown: 23 Indigo

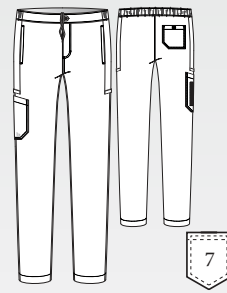


JOGGER LEG

01 Black	G
08 New Royal	G
10 White	G
23 Indigo	G
40 Ciel	G
65 Wine	G
312 Olive	•NEW
328 Bahama	G
905 Steel	G

BUP628 Cruise Pant **NEW**

7-pocket, button waistband with inside drawcord and encased elastic at back, zip fly, on-seam front pockets, side panels with angled welt cargo pockets, top entry patch cargo pocket with additional vertical zip pocket, back patch pocket with velcro closure, slim straight pant
Sizes: XS-5XL, I: 32"
SS-XLS, I: 30"
ST-XLT, I: 34"
Color shown: 08 New Royal



SLIM LEG

01 Black	G
08 New Royal	G
23 Indigo	G
905 Steel	G

G denotes colors supported for Groups

All Styles Main Fabric
 71% Polyester / 24% Rayon / 5% Spandex twill



New Fall Color

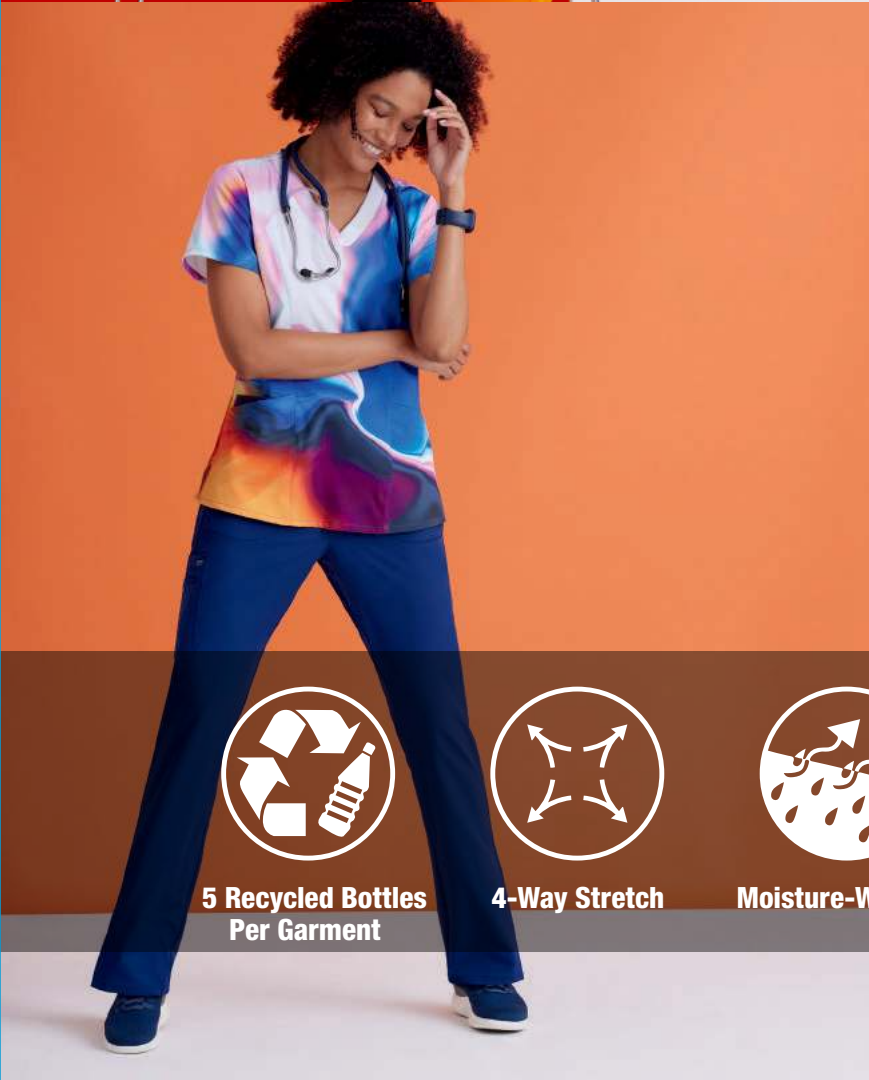
2262 Bright Turmeric



BARCO[®]
one
heart • purpose • life

PRIMARY FABRIC CONTENT

50% Polyester | 43% Recycled Polyester | 7% Spandex



**5 Recycled Bottles
Per Garment**



4-Way Stretch



Moisture-Wicking



Anti-Static

BARCO®
Made to Matter



BARCO®
one
heart • purpose • life

All Styles Main Fabric
50% Polyester
43% Recycled Polyester
7% Spandex

5105

Racer Top

4-pocket, V-neck with princess seaming and perforated panel details in front and back

Sizes: XXS - 5XL
CB: 25.5"
Color shown:
2262 Bright Turmeric

BOP513

Boost Jogger

3-pocket, double elastic waist with drawcord and perforated blocked detail leg

Sizes: XXS - 5XL, I: 30.5"
XXSP - XLP, I: 28.5"
XXST - XLT, I: 33.5"
Color shown:
2262 Bright Turmeric

NEW COLORS

Bright Turmeric

MCHB Mystic Cheetah Black

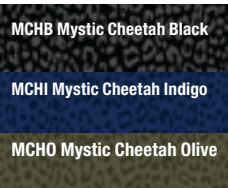
MCHI Mystic Cheetah Indigo

MCHO Mystic Cheetah Olive

See pages 58-61
for additional information



NEW COLORS



See pages 58-61
for additional information

5105

Racer Top

4-pocket, V-neck with princess seaming and perforated panel details in front and back

Sizes: XXS - 5XL

CB: 25.5"

Color shown:
MCHB

BOP513

Boost Jogger

3-pocket, double elastic waist with drawcord and perforated blocked detail leg

Sizes: XXS - 5XL, I: 30.5"

XXSP - XLP, I: 28.5"

XXST - XLT, I: 33.5"

Color shown:
MCHO

5408

Endure Jacket

2-pocket, mock neck zip front with princess seams, side zip pockets, high-low hem

Sizes: XXS - 5XL

CB: 26"

Color shown:
MCHI

*Not available in
Mystic Cheetah Olive

BARCO
one
heart • purpose • life

All Styles Main Fabric

50% Polyester
43% Recycled Polyester
7% Spandex



BARCO[®]
One
 heart • purpose • life

All Styles Main Fabric
 50% Polyester
 43% Recycled Polyester
 7% Spandex

5107-SHSK
Shimmering
Skies NEW
 4-pocket, V-neck
 with front and back
 princess seams

Sizes: XXS - 5XL
CB: 25.5"

Coordinating colors:

Black	White
New Royal	Indigo
Wine	Steel
Bright Turmeric	



5107-EREP
Electric Reptile

NEW

4-pocket, V-neck
 with front and back
 princess seams

Sizes: XXS - 5XL
 CB: 25.5"

Coordinating colors:

Black	White
New Royal	Indigo
Hunter	Ciel
Bright Turmeric	



5107-ARDR
Arcade Dreams

NEW

4-pocket, V-neck
 with front and back
 princess seams

Sizes: XXS - 5XL
 CB: 25.5"

Coordinating colors:

Black	White
New Royal	Indigo
Ciel	Bright Turmeric



BARCO®
one
 heart • purpose • life

All Styles Main Fabric

50% Polyester
 43% Recycled Polyester
 7% Spandex

**BOW883
 Amplify Warm-Up**

3-pocket bomber, knit neck and knit cuffs on raglan sleeves, 2-way zipper with cover, secure zip closure shoulder pocket with pen slots warm-up

Sizes: XS - 5XL
 CB: 28"
 Color shown:
 01 Black

**0217
 Amplify Pant**

7-pocket, elastic waist cargo with drawcord, back perforated knee panels and functional zip fly front with gusseted inseam

Sizes: XS - 5XL, I: 32"
 ST - XLT, I: 34"
 XSS - 3XLS, I: 30"
 Color shown:
 01 Black



0115
Men's Amplify Top
 5-pocket V-neck with raglan sleeve details, hidden pocket and chest pocket with a secure zip media pocket

Sizes: XS - 5XL
CB: 30"
Color shown:
114 Cobalt

0217
Amplify Pant
 7-pocket, elastic waist cargo with drawcord, back perforated knee panels and functional zip fly front with gusseted inseam

Sizes: XS - 5XL, I: 32"
ST - XLT, I: 34"
XSS - 3XLS, I: 30"
Color shown:
114 Cobalt



B0P520
Men's Vortex Jogger
 6-pocket, drawcord full elastic waistband, single zip double cargo, inside coin pocket and perforated details jogger

Sizes: XS - 5XL, I: 30"
ST - XLT, I: 32"
XSS - 3XLS, I: 28"
Color shown:
114 Cobalt

BARCO[®]
one
 heart • purpose • life

All Styles Main Fabric
50% Polyester
43% Recycled Polyester
7% Spandex

5106 Pulse Top

5-pocket, shaped V-neck with sporty seaming, perforated panels in front and back
Sizes: XXS - 5XL, CB: 25.5"
Color shown: 328 Bahama

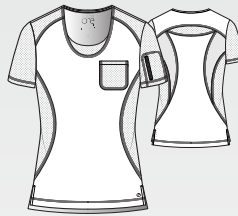


01 Black	G
08 New Royal	G
23 Indigo	G
37 Hunter	G
39 Teal	G
40 Ciel	G
65 Wine	G
114 Cobalt	G
328 Bahama	G
905 Steel	G
[Patterned Section]	

BOT142 Uplift Top

2-pocket, scoop neck, perforated chest patch pocket, sleeve zipper pocket, perforated sleeves, knit and perforated body panels, curved seaming, high-low hem tuck-in top
Sizes: XXS - 5XL, CB: 26"
Color shown: 23 Indigo

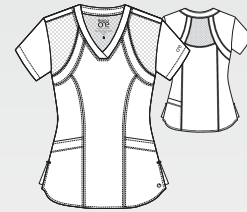
Knit Accents Content:
88% Polyester/12% Spandex



01 Black	G
08 New Royal	G
23 Indigo	G
[Patterned Section]	
65 Wine	G
[Patterned Section]	
328 Bahama	G
905 Steel	G
[Patterned Section]	

5105 Racer Top

4-pocket, V-neck with princess seaming and perforated panel details in front and back
Sizes: XXS - 5XL, CB: 25.5"
Color shown: 114 Cobalt



01 Black	G
08 New Royal	G
23 Indigo	G
37 Hunter	G
39 Teal	G
40 Ciel	G
65 Wine	G
114 Cobalt	G
328 Bahama	G
905 Steel	G
2262 Bright Turmeric	•NEW
MCHB Mystic Cheetah Black	•NEW
MCHI Mystic Cheetah Indigo	•NEW
MCHO Mystic Cheetah Olive	•NEW

All Styles Main Fabric

50% Polyester/43% Recycled Polyester/7% Spandex

G denotes colors supported for Groups



BOP513 Boost Jogger

3-pocket, double elastic waist with drawcord and perforated blocked detail leg

Sizes: XXS - 5XL, I: 30.5"

XXSP - XLP, I: 28.5"

XXST - XLT, I: 33.5"

Color shown: 65 Wine

Knit Accents Content:

88% Polyester/12% Spandex



01 Black	G
08 New Royal	G
23 Indigo	G
37 Hunter	G
39 Teal	G
40 Ciel	G
65 Wine	G
114 Cobalt	G
328 Bahama	G
905 Steel	G
2262 Bright Turmeric	•NEW
MCHB Mystic Cheetah Black	•NEW
MCHI Mystic Cheetah Indigo	•NEW
MCHO Mystic Cheetah Olive	•NEW

BOP597 Uplift Pant

5-pocket, knit waistband with drawcord, front and back welt pockets, single double cargo pocket, perforated hip and leg panels.

Sizes: XXS - 5XL, I: 30"

XXSP - XLP, I: 28"

XXST - XLT, I: 32"

Color shown: 905 Steel

Knit Accents Content:

88% Polyester/12% Spandex



01 Black	G
08 New Royal	G
23 Indigo	G
65 Wine	G
328 Bahama	G
905 Steel	G

5206 Stride Pant

5-pocket, yoga pant with cargo pocket, knit waistband and drawcord

Sizes: XXS - 5XL, I: 31.5"

XXSP - XLP, I: 29.5"

XXST - XLT, I: 33.5"

Color shown: 39 Teal

Knit Accents Content:

88% Polyester/12% Spandex



01 Black	G
08 New Royal	G
23 Indigo	G
37 Hunter	G
39 Teal	G
40 Ciel	G
65 Wine	G
114 Cobalt	G
328 Bahama	G
905 Steel	G

G denotes colors supported for Groups

All Styles Main Fabric

50% Polyester/43% Recycled Polyester/7% Spandex



5405 Endure Jacket

2-pocket, mock neck zip front with princess seams, side zip pockets, high-low hem

Sizes: XXS - 5XL, CB: 26"

Color shown: 01 Black

Zippers are all black except white has white zipper



01 Black
23 Indigo
905 Steel

5408 Endure Jacket (Prints):

MCHB Mystic Cheetah Black	•NEW
MCHI Mystic Cheetah Indigo	•NEW

5409 Cadence Warm-Up

4-pocket, jewel neck with perforated racer style insets, dyed-to-match snap front, hidden pocket, zipper pocket with logo pull, high-low hem, and seamless knit sock cuff

Sizes: XXS - 5XL, CB: 27"

Color shown: 65 Wine

Knit Accents Content:
80% Polyester/20% Spandex



01 Black	G
08 New Royal	G
23 Indigo	G
37 Hunter	G
40 Ciel	G
65 Wine	G
114 Cobalt	G
328 Bahama	G
905 Steel	G

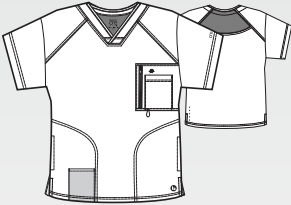
0115 Men's Amplify Top

5-pocket V-neck with raglan sleeve details, hidden pocket and chest pocket with a secure zip media pocket

Sizes: XS - 5XL, CB: 30"

Color shown: 37 Hunter

All zippers are black



01 Black	G
08 New Royal	G
23 Indigo	G
37 Hunter	G
39 Teal	G
40 Ciel	G
65 Wine	G
114 Cobalt	G
328 Bahama	G
905 Steel	G

All Styles Main Fabric

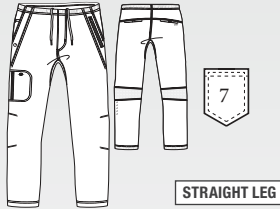
50% Polyester/43% Recycled Polyester/7% Spandex

G denotes colors supported for Groups



0217 Men's Amplify Pant

7-pocket, elastic waist cargo with drawcord, back perforated knee panels and functional zip fly front with gusseted inseam
 Sizes: XS - 5XL, I: 32"
 ST - XLT, I: 34"
 XSS - 3XLS, I: 30"
 Color shown: 65 Wine

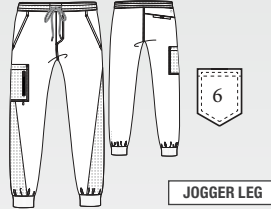


STRAIGHT LEG

01 Black	G
08 New Royal	G
23 Indigo	G
37 Hunter	G
39 Teal	G
40 Ciel	G
65 Wine	G
114 Cobalt	G
328 Bahama	G
905 Steel	G

BOP520 Men's Vortex Pant

6-pocket, drawcord full elastic waistband, single zip double cargo, inside coin pocket and perforated details jogger
 Sizes: XS - 5XL, I: 30"
 ST - XLT, I: 32"
 XSS - 3XLS, I: 28"
 Color shown: 905 Steel
 Knit Accents Content:
 94% Polyester/6% Spandex

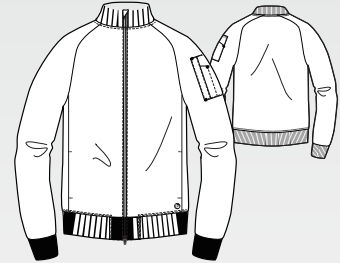


JOGGER LEG

01 Black	G
08 New Royal	G
23 Indigo	G
37 Hunter	G
65 Wine	G
114 Cobalt	G
328 Bahama	G
905 Steel	G

BOW883 Amplify Warm-Up

3-pocket bomber, knit neck and knit cuffs on raglan sleeves, 2-way zipper with cover, secure zip closure shoulder pocket with pen slots warm-up
 Sizes: XS - 5XL, CB: 28"
 Color shown: 23 Indigo



01 Black	G
23 Indigo	G

G denotes colors supported for Groups

All Styles Main Fabric
 50% Polyester/43% Recycled Polyester/7% Spandex



New Fall Color

1293 Royal Lilac

SKECHERS
by Barco™

PRIMARY FABRIC CONTENT

54% Polyester | 40% Recycled Polyester | 6% Spandex



Eco-Friendly Fabric



4-Way Stretch



Moisture-Wicking



Comfort Included

BARCO
Made to Matter

SKECHERS™
BY BARCO



All Styles Main Fabric
54% Polyester
40% Recycled Polyester
6% Spandex

**SKT147
Dignity Tuck-In Top**
1-pocket, V-neck with
contrast rib, front yoke seam
with badge loop, single chest
pocket, high-low hem
tuck-in top
*Sizes: XXS - 5XL
CB: 26"
Color shown:
1293 Royal Lilac*



**SKP552
Theory Jogger**
4-pocket, drawcord
waistband mid-rise,
with double cargo
pocket and pen slot
*Sizes: XXS - 5XL, I: 29"
XXSP - XLP, I: 27"
XST - XLT, I: 31"
Color shown:
1293 Royal Lilac*

NEW COLORS

Teal

Moonstruck

Royal Lilac

*See pages 71-73
for additional information*



NEW COLORS

Moonstruck

Royal Lilac

See pages 71-73
for additional information

SK101

Breeze Top

3-pocket, virtual V-neck, shaped hem, detailed cover stitching, contrast back neck binding

Sizes: XXS - 5XL
CB: 25.5"

Color shown:
471 Moonstruck

SKP623

Gamma Pant **NEW**

6-pocket, encased elastic waistband with drawcord, trouser front pockets, double cargo pocket, back patch pockets, forward leg seam, hem vent with logo tape, tapered leg pant

Sizes: XXS - 5XL, I: 30"
XXSP - XLP, I: 28"
XST - XLT, I: 32"

Color shown:
1293 Royal Lilac

*Not available in Moonstruck

SKECHERS
by Barco

All Styles Main Fabric
54% Polyester
40% Recycled Polyester
6% Spandex



Eco-Friendly
Fabric

SKECHERS
by Barco™

All Styles Main Fabric
54% Polyester
40% Recycled Polyester
6% Spandex

SKT175-ARLA

Arctic Landscape **NEW**

Men's -pocket, crossover
V-neck with chest pocket, full
running side step-cut side
vent detail top

Sizes: XS - 5XL

CB: 29.5"

Pant shown: SK0215-08

Coordinating colors:

Black
Pewter
Moonstruck
New Royal
Navy



Eco-Friendly
Fabric



SKT174-BIOP

Bird of Paradise **NEW**

1-pocket V-neck with contrast rib, front yoke seam with badge loop, single chest pocket, high-low hem tuck-in top

Sizes: XXS - 5XL

CB: 26"

Pant shown: SK201-1277

Coordinating colors:

New Royal

Royal Lilac

Eggplant



Eco-Friendly
Fabric



SKT174-RORA

Royal Radiance **NEW**

1-pocket V-neck with contrast rib, front yoke seam with badge loop, single chest pocket, high-low hem tuck-in top

Sizes: XXS - 5XL

CB: 26"

Pant shown: SKP552-1293

Coordinating colors:

Royal Lilac



All Styles Main Fabric

54% Polyester

40% Recycled Polyester

6% Spandex



When you purchase BOBS, a donation will be made to Petco Love to help save the lives of dogs and cats.



If you've ever shared your life with a pet, you know that love changes everything. Love is why we've teamed up with Petco Love to help create a better world for pets. When you purchase this product, a donation will be made to help save the lives of dogs and cats.



Eco-Friendly
Fabric



❖ NOT SOLD ON AMAZON



SKT021-HEHE

Hearts on Hearts **New**

3-pocket, virtual V-neck, shaped hem, detailed cover stitching

Sizes: XS - 5XL

CB: 25.5"

Coordinating colors:

White
Pewter
Hunter
Khaki
Royal Lilac
Moonstruck
Navy



Eco-Friendly
Fabric



BOBS

from Skechers.

When you purchase BOBS, a donation will be made to Petco Love to help save the lives of dogs and cats.



If you've ever shared your life with a pet, you know that love changes everything. Love is why we've teamed up with Petco Love to help create a better world for pets. When you purchase this product, a donation will be made to help save the lives of dogs and cats.

Coordinating colors:

White	Royal Lilac
Black	Moonstruck
Pewter	
New Turquoise	
True Red	
Khaki	

SKT021-POTF

Part of the Family New

3-pocket, virtual V-neck, shaped hem, detailed cover stitching

Sizes: XS - 5XL

CB: 25.5"



SKECHERS
by Barco™

❖ **NOT SOLD ON AMAZON**



All Styles Main Fabric
 54% Polyester
 40% Recycled Polyester
 6% Spandex

**SK0112
 Structure Top**
 1-pocket, crossover
 V-neck top with chest
 pocket, full running
 side step-cut side
 vent detail
*Sizes: XS - 5XL
 CB: 29.5"*
Color shown:
 471 Moonstruck
Pant shown:
 SK0215-471

**SK0215
 Structure Pant**
 4-pocket, full elastic
 waistband drawcord,
 inseam gusset, cargo
 pocket
Sizes: XS - 5XL, I: 32"
XSS - XLS, I: 30"
ST - XLT, I: 34"
Color shown:
 471 Moonstruck

**SK0408
 Structure Warm-Up**
 3-pocket, rib collar
 and cuffs, with zip
 front closure
Sizes: XS - 5XL, CB: 30"
Color shown:
 471 Moonstruck
Pant shown:
 SK0215-471

Seamless Cuff:
 80% Polyester/20% spandex
 knit Dyed-to-match Zippers

NEW COLOR
 Moonstruck
 See pages 71-73
 for additional information

SK0112 Structure Top

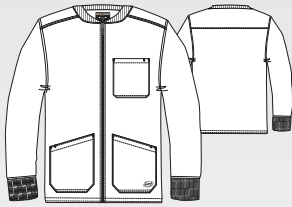
1-pocket, crossover V-neck top with chest pocket, full running side step-cut side vent detail
Sizes: XS - 5XL, CB: 29.5"
Color shown: 08 New Royal



01 Black	G
08 New Royal	G
10 White	G
18 Pewter	G
37 Hunter	G
39 Teal	G
40 Ciel	G
41 Navy	G
65 Wine	G
230 Khaki	G
328 Bahama	G
471 Moonstruck •NEW	G
503 Galaxy	G
1276 New Grape	G
1277 Eggplant	G
1295 True Red	G

SK0408 Structure Warm-Up

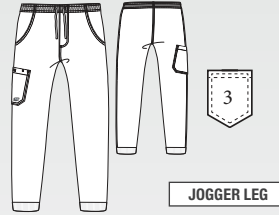
3-pocket, rib collar and cuffs, with zip front closure
Sizes: XS - 5XL, CB: 30"
Color shown: 328 Bahama
Seamless Cuff:
80% Polyester/20% spandex knit
Dyed-to-match Zippers



01 Black	G
08 New Royal	G
10 White	G
18 Pewter	G
37 Hunter	G
39 Teal	G
40 Ciel	G
41 Navy	G
65 Wine	G
230 Khaki	G
328 Bahama	G
471 Moonstruck •NEW	G
503 Galaxy	G
1276 New Grape	G
1277 Eggplant	G
1295 True Red	G

SKP572 Structure Jogger

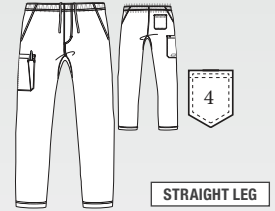
3-pocket, self full encased elastic waistband with drawcord, front fly, velcro closure single patch cargo pocket, rib cuff jogger
Sizes: XS - 3XL, I: 29"
SS - XLS, I: 27"
Color shown: 65 Wine
Knit Accents Content:
94% Polyester/6% Spandex



01 Black	G
08 New Royal	G
18 Pewter	G
40 Ciel	G
41 Navy	G
65 Wine	G
328 Bahama	G

SK0215 Structure Pant

4-pocket, full elastic waistband drawcord, inseam gusset, cargo pocket
Sizes: XS - 5XL, I: 32"
XSS - XLS, I: 30"
ST - XLT, I: 34"
Color shown: 40 Ciel



01 Black	G
08 New Royal	G
10 White	G
18 Pewter	G
37 Hunter	G
39 Teal	G
40 Ciel	G
41 Navy	G
65 Wine	G
230 Khaki	G
328 Bahama	G
471 Moonstruck •NEW	G
503 Galaxy	G
1276 New Grape	G
1277 Eggplant	G
1295 True Red	G

All Styles Main Fabric
 54% Polyester/40% Recycled Polyester/6% Spandex



SKT147 Dignity Tuck-In Top

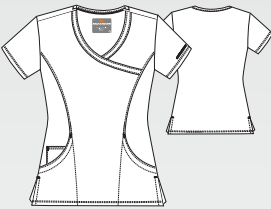
1-pocket, V-neck with contrast rib, front yoke seam with badge loop, single chest pocket, high-low hem tuck-in top
Sizes: XXS - 5XL, CB: 26"
Color shown: 18 Pewter



01 Black	G
08 New Royal	G
10 White	G
18 Pewter	G
37 Hunter	G
39 Teal	G
40 Ciel	G
41 Navy	G
65 Wine	G
328 Bahama	G
471 Moonstruck	G
1293 Royal Lilac	•NEW

SK102 Reliance Top

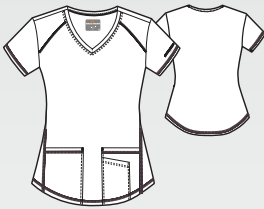
3-pocket, V-neck surplice with front princess seams, side vent detail, contrast back neck binding
Sizes: XXS - 5XL, CB: 25.5"
Color shown: 1277 Eggplant



01 Black	G
08 New Royal	G
10 White	G
18 Pewter	G
37 Hunter	G
39 Teal	G
40 Ciel	G
41 Navy	G
65 Wine	G
230 Khaki	G
328 Bahama	G
503 Galaxy	G
1276 New Grape	G
1277 Eggplant	G
1295 True Red	G
1659 New Turquoise	

SK101 Breeze Top

3-pocket, virtual V-neck, shaped hem, detailed cover stitching, contrast back neck binding
Sizes: XXS - 5XL, CB: 25.5"
Color shown: 40 Ciel



01 Black	G
08 New Royal	G
10 White	G
18 Pewter	G
37 Hunter	G
39 Teal	G
40 Ciel	G
41 Navy	G
65 Wine	G
230 Khaki	G
328 Bahama	G
471 Moonstruck	G
503 Galaxy	G
1276 New Grape	G
1277 Eggplant	G
1293 Royal Lilac	•NEW
1295 True Red	G
1659 New Turquoise	

SK401 Stability Warm-Up

2-pocket, round neck, snap front closure, dyed-to-match seamless knit sock cuff sleeves, contrast back neck binding
Sizes: XS - 5XL, CB: 27"
Color shown: 37 Hunter
Seamless Cuff: 100% Polyester



01 Black	G
08 New Royal	G
10 White	G
18 Pewter	G
37 Hunter	G
39 Teal	G
40 Ciel	G
41 Navy	G
65 Wine	G
230 Khaki	G
328 Bahama	G
471 Moonstruck	G
503 Galaxy	G
1276 New Grape	G
1277 Eggplant	G
1295 True Red	G
1659 New Turquoise	

All Styles Main Fabric
54% Polyester/40% Recycled Polyester/6% Spandex

G denotes colors supported for Groups



SKP552 Theory Jogger

4-pocket, drawcord waistband
mid-rise, with double cargo
pocket and pen slot
Sizes: XXS - 5XL, I: 29"
XXSP - XLP, I: 27"
XST - XLT, I: 31"
Color shown: 65 Wine
Knit Accents Content:
88% Polyester/12% Spandex



01 Black	G
08 New Royal	G
10 White	G
18 Pewter	G
37 Hunter	G
39 Teal	G
40 Ciel	G
41 Navy	G
65 Wine	G
230 Khaki	G
328 Bahama	G
471 Moonstruck	G
1293 Royal Lilac	•NEW
1295 True Red	G

SK201 Reliance Pant

3-pocket, flat front with tape
tie, branded, inside logo plush
elastic waistband, cargo pocket
Sizes: XXS - 5XL, I: 31.5"
XXSP - 2XLP, I: 29.5"
XXST - XLT, I: 33.5"
Color shown: 39 Teal



01 Black	G
08 New Royal	G
10 White	G
18 Pewter	G
37 Hunter	G
39 Teal	G
40 Ciel	G
41 Navy	G
65 Wine	G
230 Khaki	G
328 Bahama	G
471 Moonstruck	G
503 Galaxy	G
1276 New Grape	G
1277 Eggplant	G
1295 True Red	G
1659 New Turquoise	

SK202 Breeze Pant

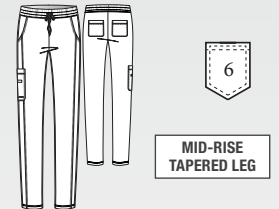
3-pocket, logo plush elastic
waistband, cargo pocket
Sizes: XXS - 5XL, I: 31.5"
XXSP - 2XLP, I: 29.5"
XXST - XLT, I: 33.5"
Color shown: 1295 True Red



01 Black	G
08 New Royal	G
10 White	G
18 Pewter	G
37 Hunter	G
39 Teal	G
40 Ciel	G
41 Navy	G
65 Wine	G
230 Khaki	G
328 Bahama	G
503 Galaxy	G
1276 New Grape	G
1277 Eggplant	G
1295 True Red	G
1659 New Turquoise	

SKP623 Gamma Pant

6-pocket, encased elastic
waistband with drawcord,
trouser front pockets, double
cargo pocket, back patch
pockets, forward leg seam,
hem vent with logo tape,
tapered leg pant
Sizes: XXS - 5XL, I: 30"
XXSP - XLP, I: 28"
XST - XLT, I: 32"
Color shown: 1293 Royal Lilac



01 Black	
08 New Royal	
18 Pewter	
41 Navy	
1293 Royal Lilac	•NEW

G denotes colors supported for Groups

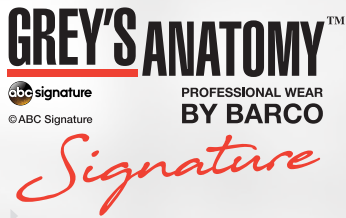
All Styles Main Fabric
54% Polyester/40% Recycled Polyester/6% Spandex



A woman with dark hair, wearing a white lab coat over a dark top and grey trousers, is sitting on a metal stool. She has a stethoscope around her neck and glasses on her head. The background is a plain, light-colored wall.

JACKET REQUIRED

LAB COATS



Fabric Content

70% Polyester / 25% Rayon / 5% Spandex Twill
WITH 4-WAY STRETCH

Style:	Length:	Sizes:	Tall:	Pockets	Buttons	Description	Sleeve Length:	Sketch:
2405 2405X	31-33.5" 33.5-34.25"	XXS-XL 2XL-5XL	NA		3	Women's round notch collar lab coat, with 2 front pockets, 1 chest pocket, pen slot, and loose back 3 button adjustable back belt.	24-25.25" 24-24.75"	
GNC003 GNC003X	33.5-35.5" 33.5-34.25"	XS-XL 2XL-3XL	NA		1	Women's modern flat collar, snap front closure, inside chest pocket, interior fully lined back vent lab coat	24.25-25.25"	
GNC001 GNC001X	33.5-35.5" 35.5-35.75"	XS-XL 2XL-3XL	NA		3	Women's lab coat with 2 front pockets, long sleeve, princess front and back with 2 back vents	24.25-24.25" 24.25-24.5"	
2402 2402X	35" 35"	XXS-XL 2XL-3XL	NA		3	Women's lab coat with 2 front pockets, back sewn down belt, and front and back princess seams.	24-25.25" 24.5-24.75"	



Fabric Content

80% Polyester / 20% Cotton Peached Twill

Style:	Length:	Sizes:	Tall:	Pockets	Buttons	Description	Sleeve Length:	Sketch:
GRC950 GRC950X	29-31.5" 31.5-32.25"	XXS-XL 2XL-5XL	NA		4	Women's 2-piece long sleeve lab coat, with button sleeve details and contrast printed lining and cuff facing	24-25.25" 24.5-25.25"	
7446 7446X	30.5-33" 33-33.75"	XXS-XL 2XL-5XL	NA		3	Women's lab coat with button tab front pockets, loose back button belt, and back vent.	23-24.25" 24.25-25"	
4481 4481X	33.5-35.5" 35-35.75"	XS-XL 2XL-5XL	NA		4	Women's lab coat with princess seamed front, up dated rounded collar, inset belt, loose button back belt, and back vent.	23.5-24.5" 24.125-24.875"	
GRC951 GRC951X	33-35.5" 35.5-36.25"	XXS-XL 2XL-5XL			4	Women's 2-piece long sleeve, crossover yoke detail, and belted back waist	24.25-25.5" 24.5-25.25"	
GRSC009	36-38.25"	32-50			3	Men's 3-button, side seam entry slits, button sleeves, back vent lab coat	25.25-27"	
0914 0914X 0914L 0914XL	35.75-37.75" 38-38.75" 39.75-41.75" 42-42.75"	32-48 50-56	36-48L 50-56L		4	Men's lab coat with tablet pockets, inside larger pockets, chest pocket with pen slots center back French seam, and extra length vent.	23.875-25.25" 25.5-26" 24.875-26.25" 26.5-27"	

GREY'S ANATOMY™

abc signature
© ABC Signature

PROFESSIONAL WEAR
BY BARCO

Signature

GNC003 Alexis

Women's modern flat collar, snap front closure, inside chest pocket, interior fully lined back vent lab coat

Sizes: XS-3XL

Length*: 34"

Sleeve length: 24.5"

Buttons: 1



See page 75 for all details. Garment outlines added to highlight details only.

GREY'S ANATOMY™

abc signature
© ABC Signature

PROFESSIONAL WEAR
BY BARCO

Signature

GNC001 Eve

Women's lab coat with 2 front pockets, long sleeve, princess front and back with 2 back vents

Sizes: XS-3XL

Length*: 34"

Sleeve length: 24.5"

Buttons: 3



Fabric content

75% Polyester / 20% Rayon / 5% Spandex

WITH 4-WAY STRETCH



See page 75 for all details. Garment outlines added to highlight details only.

GREY'S ANATOMY™

abc signature
© ABC Signature

PROFESSIONAL WEAR
BY BARCO

Signature

2402 Morgan

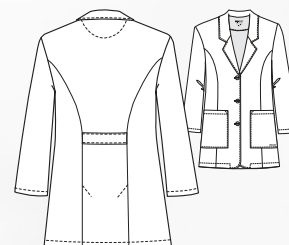
Women's lab coat with 2 front pockets, back sewn down belt, and front and back princess seams.

Sizes: *XXS-3XL*

Length*: *35"*

Sleeve length: *24.5"*

Buttons: *3*



Fabric content

75% Polyester/20% Rayon/5% Spandex
WITH 4-WAY STRETCH

Garment outlines added to highlight details only.



GREY'S ANATOMY™

abc signature
© ABC Signature

PROFESSIONAL WEAR
BY BARCO

Signature

2405 Brooke

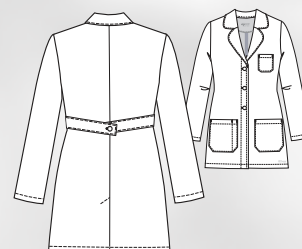
Women's round notch collar lab coat, with 2 front pockets, 1 chest pocket, pen slot, and loose back 3 button adjustable back belt.

Sizes: *XXS-5XL*

Length*: *32"*

Sleeve length: *24.5"*

Buttons: *3*



Fabric content

75% Polyester / 20% Rayon / 5% Spandex
WITH 4-WAY STRETCH

7446 Hannah

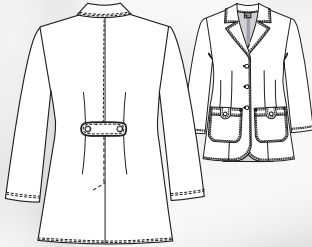
Women's lab coat with waist seam, front and back tapered darts, and back vent.

Sizes: XXS-5XL

Length*: 31.5"

Sleeve length: 23.5"

Buttons: 3



Fabric Content

80% Polyester / 20% Cotton Peached Twill



See page 75 for all details. Garment outlines added to highlight details only.

GRC950 Ivy

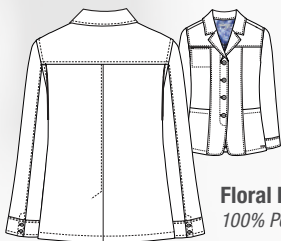
Women's 2-piece long sleeve lab coat, with button sleeve details and contrast printed lining and cuff facing

Sizes: XXS-5XL

Length*: 30"

Sleeve length: 24.5"

Buttons: 4



Floral Print Contrast
100% Polyester





GRC951 Tricia

Women's 2-piece long sleeve, crossover yoke detail, and belted back waist

Sizes: XXS-5XL

Length*: 34"

Sleeve length: 24.75"

Buttons: 4



Fabric Content

80% Polyester / 20% Peached Twill

See page 75 for all details. Garment outlines added to highlight details only.



4481 Lily

Women's lab coat with princess seamed front, up dated rounded collar, inset belt, loose button back belt, and back vent.

Sizes: XS-5XL

Length*: 34"

Sleeve length: 23.75"

Buttons: 4



Fabric Content

80% Polyester / 20% Peached Twill

GRSC009 Liam

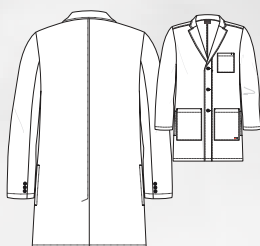
Men's 3-button, side seam entry slits,
button sleeves, back vent lab coat

Sizes: 32-50

Length*: 37"

Sleeve length: 26"

Buttons: 3



See page 75 for all details.

Garment outlines added to highlight details only.



0914 Noah

Men's lab coat with tablet pockets, inside larger pockets, chest pocket with pen slots center back French seam, and extra length vent.

Sizes: 32-56

Length*: 37"

Sleeve length: 24.75"

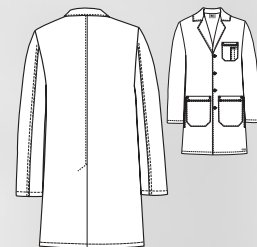
0914L

Sizes: 36-48L, 50-56L

Length*: 41"

Sleeve length: 25.75"

Buttons: 4



Fabric Content

80% Polyester / 20% Cotton Peached Twill

See page 75 for all details.

Garment outlines added to highlight details only.



Key Promotional Dates

While maintaining the value of our brands remains key to delivering on our high standards and maximizing your gross margin, we also recognize the power of a promotion to drive traffic. We're excited to, once again, offer 20% off MAP pricing during select dates in 2023.

Below please find the 2023 Key Promotional Dates when all retailers are authorized to promote Barco Brands at up to 20% off* MAP pricing. Please note that BARCO UNIFY is not listed, as this collection is excluded from all MAP promotions. You can find more details in our Terms & Conditions.

Promotion	Start Date	End Date
Winter Promotion	January 6, 2023	January 16, 2023
Nurses Appreciation Week	May 5, 2023	May 15, 2023
Prime Day	TBD	TBD
Customer Appreciation	August 4, 2023	August 14, 2023
Black Friday & Cyber Monday	November 22, 2023	November 28, 2023

***BARCO UNIFY cannot be advertised below MAP during any of the promotion periods listed above.**

Barco Brands & Collections that are included in MAP Promotions:







In honor of the healthcare professionals who go above and beyond to make a difference in our lives, Barco's Nightingales Foundation provides critical resources to children in need. Since 2020, our Foundation has focused its efforts on Haiti, which has the highest hunger rates in the Western hemisphere. Our two dedicated teams make monthly trips to remote villages near our solar wells, traversing rough terrain to deliver food to 6,000 families in hard-to-reach, underserved areas.

Because of your continued support, we're unwavering in our mission to keep hope alive. Thank you for helping to make a difference.



barcosnightingales.org

CM228